



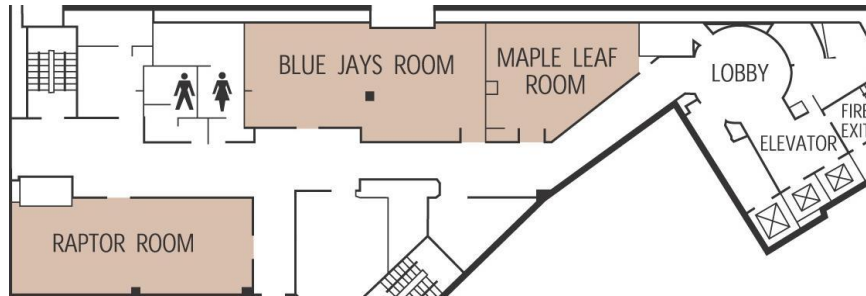
**MARRIOTT  
TORONTO  
CITY CENTRE  
Floor Plans & Capacity Chart**

| Meeting Room                | WxLxH    | Sq. ft | Ceiling Height (ft) | B/R | T/S | CR  | HS | U-Shape | 1/2 rounds | Banquet Lunch/Dinner** |     | Reception |
|-----------------------------|----------|--------|---------------------|-----|-----|-----|----|---------|------------|------------------------|-----|-----------|
| <b>Second Floor</b>         |          |        |                     |     |     |     |    |         |            |                        |     |           |
| Northern Lights Ballroom    | 47x85x14 | 4,066  | 14                  |     | 320 | 150 | 54 | 45      | 150        | 200                    | 250 | 300       |
| Aurora Room                 | 33x75x14 | 2,110  | 14                  | 28  | 80  | 48  | 42 | 36      | 42         | 96                     | 120 | 150       |
| <b>Club Concourse Level</b> |          |        |                     |     |     |     |    |         |            |                        |     |           |
| Blue Jays Room              | 24x54x10 | 1,308  | 10                  | 20  | 70  | 42  | 30 | 24      | 30         | 56                     |     | 80        |
| Raptor Room                 | 22x55x10 | 1,185  | 10                  | 40  | 100 | 60  | 42 | 36      | 48         | 64                     |     | 80        |
| Maple Leaf Room             | 20x32x10 | 640    | 10                  | 24  | 40  | 24  | 24 | 18      | 24         | 32                     |     | 40        |
| <b>First Floor</b>          |          |        |                     |     |     |     |    |         |            |                        |     |           |
| SkyBox 1                    | 14x18x8  | 469    | 7.8                 | 10  |     |     |    |         |            |                        |     | 25        |
| SkyBox 2                    | 13x20x7  | 450    | 7.1                 | 10  |     |     |    |         |            |                        |     | 25        |
| SkyBox 3                    | 13x26x7  | 444    | 7.1                 | 12  |     |     |    |         |            |                        |     | 25        |
| SkyBox 4                    | 20x26x8  | 572    | 7.8                 | 16  |     |     |    |         |            |                        |     | 30        |
| <b>Lobby Level</b>          |          |        |                     |     |     |     |    |         |            |                        |     |           |
| La Terraza                  | 28x35x8  | 980    | 8.2                 |     |     |     |    |         |            |                        | 50  | 60        |

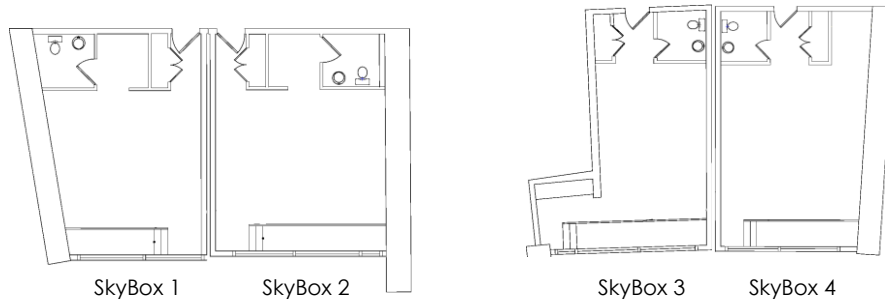
\* NOTE: All capacities are considered maximum capacities and include a minimal A/V set-up (front screen projection).

\*\* NOTE: At full room (wall to wall) set up.

Concourse Level



1st Floor



2nd Floor

