

HOT SPOTS & HISTORY

IN THE HEART OF DC

JW MARRIOTT WASHINGTON, DC

Experience the ultimate mix of little-known locales and historic landmarks just outside your door. With its ideal downtown location, the JW Marriott Washington, DC puts you at the center of the capital city.

AREAS TO EXPLORE



14TH STREET + LOGAN CIRCLE

From brunch to bar close, visitors and locals alike always find something one-of-a-kind in this exciting area.



SHAW

Birthplace of Duke Ellington, Shaw is now home to hip bars, restaurants and an edgy vibe all its own.



CITYCENTERDC

Beautiful public spaces enrich this neighborhood's mix of residential, high-end retail and business locations.

ENTERTAINMENT DESTINATIONS



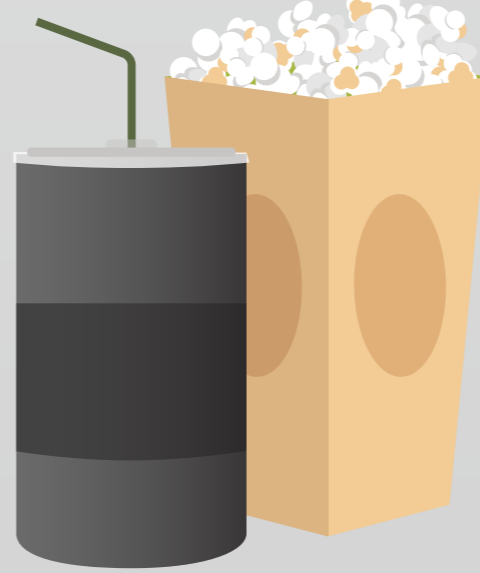
ANTHEM AT THE DISTRICT WHARF

Concerts, seminars, galas—there's always something extraordinary to see at Anthem.



THE HAMILTON

Enjoy globally-inspired cuisine and live music in a unique venue.



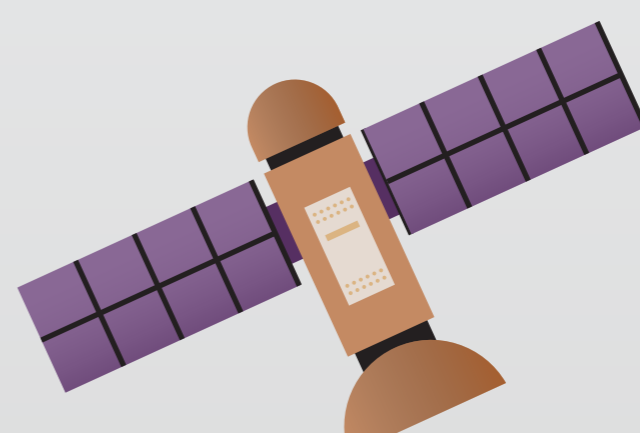
CAPITAL ONE ARENA

Catch a game or one of the many can't-miss concerts hosted at the arena.

MUSE ON IT

NATIONAL AIR AND SPACE MUSEUM

With a mission to commemorate, educate and inspire, this free museum houses the world's largest collection of aviation and space artifacts.



NATIONAL MUSEUM OF AFRICAN AMERICAN HISTORY AND CULTURE

The newest Smithsonian museum is devoted to the documentation of African American life, history and culture.



MONUMENTAL MUST-SEES

LINCOLN MEMORIAL

This landmark honors one of the most influential presidents in American history.



THE WHITE HOUSE

Stop by 1600 Pennsylvania Avenue to see the renowned residence of the Commander-in-Chief.



WASHINGTON MONUMENT

This 555-foot marble obelisk is a staple of the city's skyline, towering over some of the most significant events in American history.



JEFFERSON MEMORIAL

The memorial's location on the National Mall provides prime views of DC's famous cherry blossom trees.



START PLANNING YOUR DC EXPERIENCE TODAY.
BOOK NOW AT JWMARRIOTTDC.COM



JW MARRIOTT
WASHINGTON DC