



MARRIOTT MARQUIS
SAN DIEGO MARINA

GUESTROOMS AND SUITES



MARRIOTT MARQUIS SAN DIEGO MARINA

333 West Harbor Drive, San Diego, CA 92101
T: 619.234.1500 | MarriottMarquisSanDiego.com

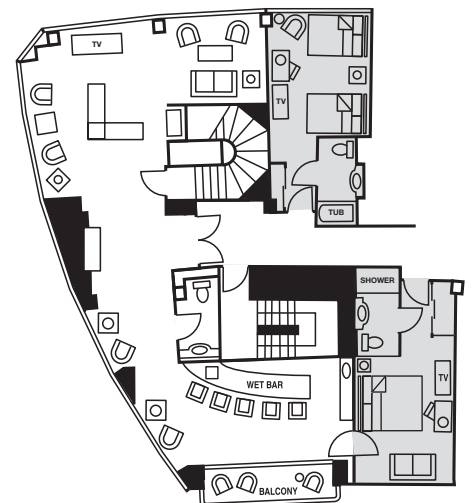
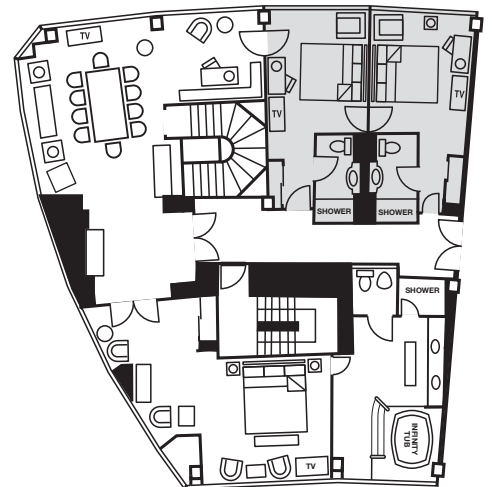


PRESIDENTIAL SUITES

MARRIOTT & ADMIRAL

FEATURES

- Located in the South Tower on the 25th & 26th floors
- Bi-level Suite
- 180-degree bay and city view
- Balcony
- Master bedroom with one king bed
- Hydrotherapy Infinity bathtub in master bedroom
- TVs located in mirrors of master bathroom
- Separate guest restroom facilities on lower level
- Accommodates up to 75 guests, reception-style
- Dining room with conference table for 10 guests
- Beverage cooler next to conference table
- Granite countertop wet bar with seating, small refrigerator, and ice maker
- Marriott and Admiral are similar in design with similar furnishings
- Upper level approximately 2,481 sq. ft.
- Lower level approximately 1,985 sq. ft.
- Additional connecting bedrooms available at an additional rate (see diagram)

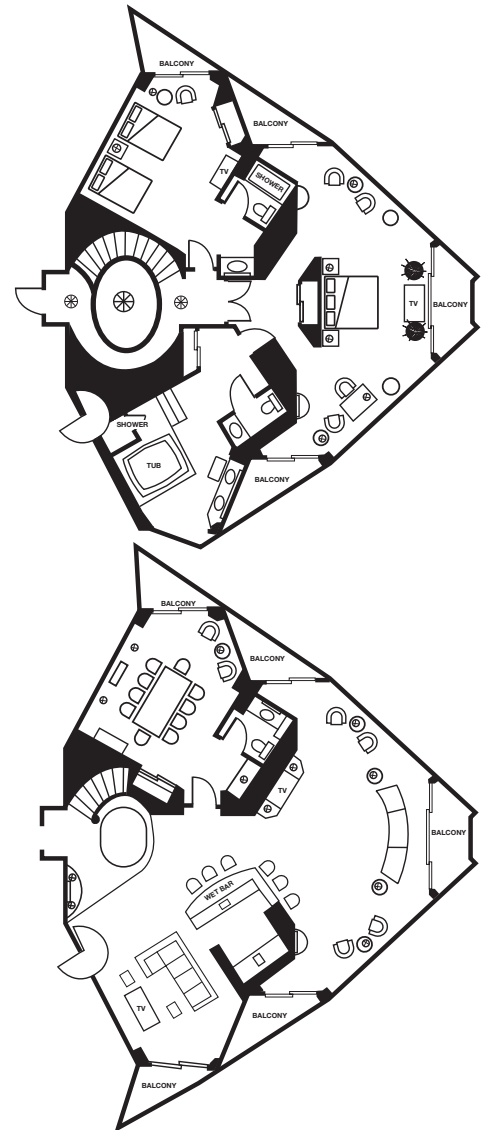




PRESIDENTIAL SUITE COMMODORE

FEATURES

- Located in the North Tower on the 25th & 26th floors
- Bi-level suite with circular stairway
- 180-degree bay and city view
- Nine balconies
- Two bedrooms located on the upper level (master bedroom with one king bed and guest room with two double beds)
- Hydrotherapy bathtub in master bedroom
- Separate guest restroom facilities
- Living room area is approximately 21'x24' and can accommodate up to 55 guests, reception-style
- Conference room and sitting room are both approximately 14'x20'
- Dining room with conference table for 10 guests
- Granite countertop wet bar with seating, small refrigerator, ice maker, and microwave
- Grand foyer
- Approximately 1,708 sq. ft. each floor
- Additional connecting bedroom with one king bed available at an additional rate

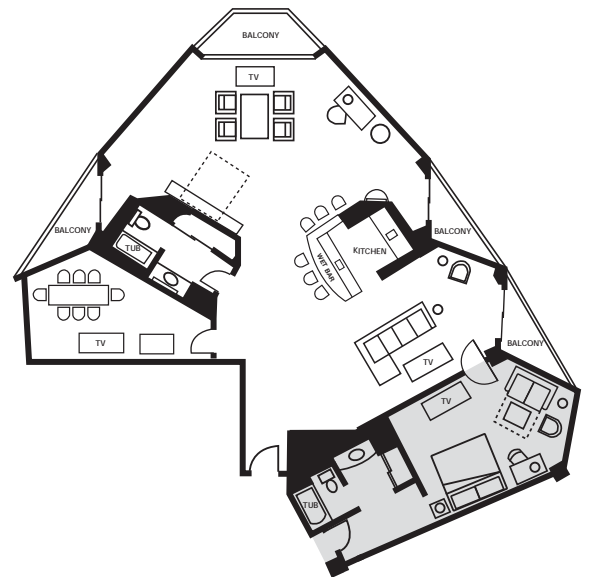




VICE PRESIDENTIAL SUITE SPINNAKER

FEATURES

- Located in the North Tower on the 3rd floor
- 180-degree bay and city view
- Four balconies
- Murphy bed in parlor
- Accommodates up to 65 guests, reception-style
- Living room area is approximately 21' x 24'
- Dining room with conference table for 8 guests
- Granite countertop wet bar with seating, small refrigerator, ice maker, and microwave
- ADA Accessible
- Approximately 2,150 sq. ft.
- Additional connecting bedroom with one king bed available at an additional rate (see diagram)

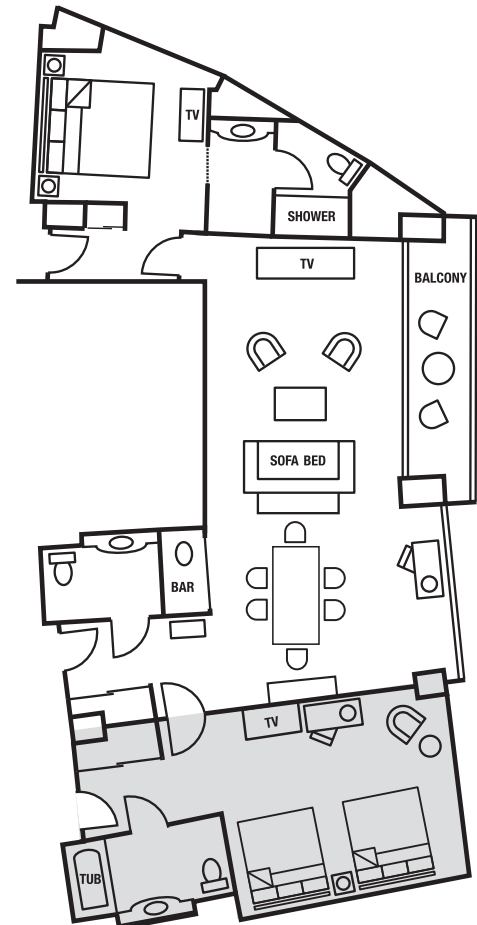




DELUXE SUITE

FEATURES

- 6 Deluxe Suites located in the South Tower on the 19th through 24th floors
- Bay view
- Balcony
- Master bedroom with one king bed
- Separate guest restroom facilities
- Living room area is approximately 32' x 14' and can accommodate up to 30 guests, reception-style
- Sofa bed in living room
- Conference table for 6 guests
- Granite countertop wet bar with small refrigerator
- Guest entrance into parlor
- Approximately 866 sq. ft.
- Additional connecting bedroom with two double beds available at an additional rate (see diagram)

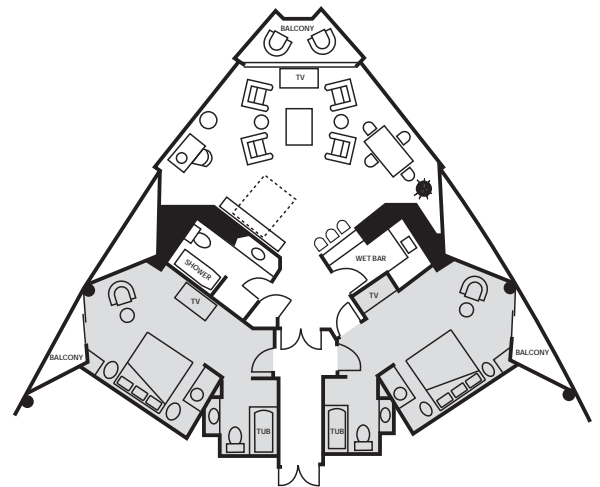




HOSPITALITY SUITE

FEATURES

- 13 spacious Hospitality Suites located in the North Tower on the 17th through 24th floors
- 180-degree bay and city view
- Balcony
- Murphy bed in parlor
- Living room area is approximately 21' x 24' and can accommodate up to 30 guests, reception-style
- Granite countertop wet bar with seating and small refrigerator
- Approximately 688 sq. ft.
- Additional connecting bedrooms available at an additional rate (see diagram)

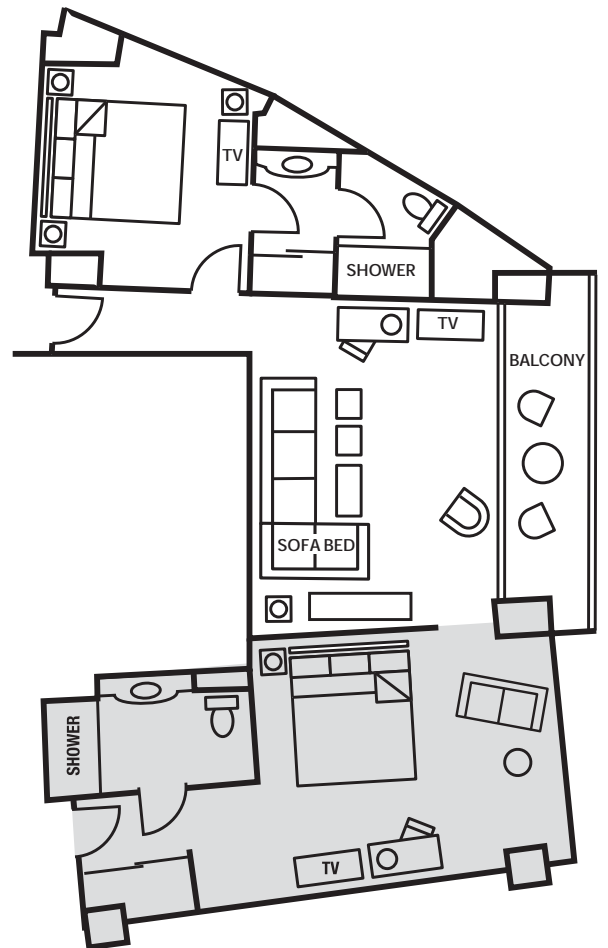




EXECUTIVE SUITE

FEATURES

- 32 Executive Suites located in the South Tower on the 4th through 24th floors
- Bay view
- Balcony
- Master bedroom with one king bed
- Living room area is approximately 18' x 13' and can accommodate up to 10 guests, reception-style
- Sofa bed in living room
- Approximately 431 sq. ft.
- Additional connecting bedroom with one king bed available at an additional rate (see diagram)

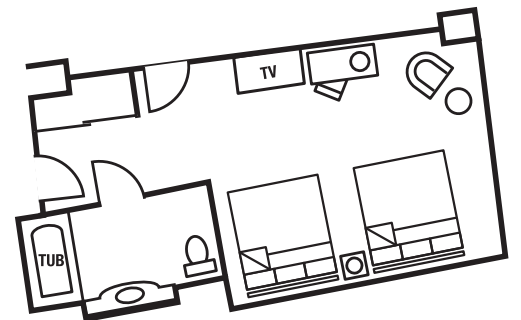
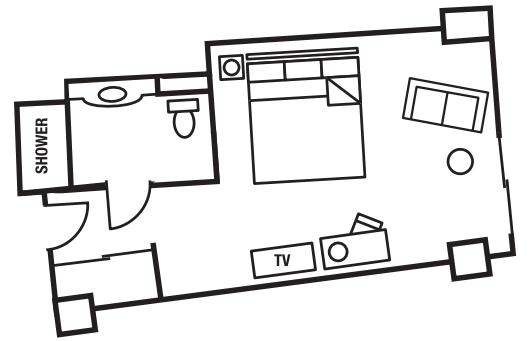




STANDARD GUESTROOM

FEATURES

- Located in the North and South Towers
- Bay view or city view
- Balcony (varies by room type)
- 1 king bed or 2 double beds
- Feather duvet and pillows
- Swivel Desk with ergonomic chair
- Flat screen TV with in-room media
- Sofa or chair
- Bathroom layout varies by room type
- ADA Accessible features (varies by room type)
- Approximately 410 sq. ft.
- Connecting room (varies by room type)



The Marriott Marquis San Diego Marina luxury waterfront hotel rests at the center of the San Diego Bay. With 1,360 guest rooms, 280,000 square feet of event space, a 446-slip marina, and an environment that easily transitions from dynamic meetings to resort-style relaxation, our impressive San Diego waterfront hotel is a welcome escape for business and families.

Adjacent to the San Diego Convention Center and steps from the Gaslamp Quarter, our downtown San Diego Bay hotel is located at the center of many popular attractions. Experience grand service and amenities throughout your stay, unwind while taking in the view from your guest room, experience top-notch cuisine at our waterfront restaurants, and enjoy a resort-like getaway at the lush pool area or state-of-the-art fitness center. Whatever you seek, it all comes together for an authentic downtown San Diego experience, only at the Marriott Marquis San Diego Marina.

PROPERTY DETAILS

Marriott Rewards category: 8

AAA Diamonds: 4

- 25 floors, 1,305 rooms, 55 suites
- Concierge Lounge
- Check-in: 4:00 PM, Check-out: 12:00 PM
- UPS Store
- Hertz car rental
- 72 hour cancellation policy

FITNESS/WELLNESS/RECREATION

- State of the Art Fitness Center - offering yoga, spinning, and fitness classes
- In Room Yoga on Channel 3
- The Hideaway- offering massage, skin care, & body treatment services
- Two heated pools, two whirlpools
- Cabanas
- Bike rentals
- Boat rentals
- Walking paths
- Marina

DINING

- Marina Kitchen Restaurant & Bar- American
- Tequila Bar & Grille- Mexican
- Roy's- Asian-Fusion
- Exchange- American
- Starbucks®- Coffee House

INTERNET ACCESS

- Guest rooms: wireless, wired
- High Speed: 12.95 USD/day
- Enhanced High Speed: 15.95 USD/day
- Complimentary for Rewards members
- Public areas: Complimentary wireless, wired
- Meeting rooms: wireless, wired (group pricing available)

GUEST PARKING

- Self-parking: 10 USD hourly, 35 USD daily
- Valet parking: 12 USD hourly, 50 USD daily

MEETING SPACE & SERVICES HIGHLIGHTS

- 280,000 square feet of indoor and outdoor event space with breathtaking marina views
- Two completely new 36,000 square foot ballrooms are the ideal spot for hosting innovative meetings and exquisite social events

EVENT FOOD & BEVERAGE

- Choose from a wide selection of expertly crafted local and regionally themed cuisine
- Tempting options offered for custom breakfast, lunch and dinner menus, as well as refreshing breaks

EVENT SERVICES & TECHNOLOGY

- From our expert meeting planning professionals and event staff to our state-of-the-art meeting facilities, you'll have everything you need to wow your guests
- Our luxury hotel provides A/V equipment and on-hand tech support to make your event run smoothly
- New 9'x16' digital walls

SOCIAL EVENTS & WEDDINGS

- We cater exceptionally to social events and weddings of all sizes
- Our (4) outdoor locations offer a picturesque waterfront setting

LOCATION

- Adjacent to the Convention Center
- 2 blocks from the Gaslamp District
- 2.8 miles from the San Diego Airport