



GROSVENOR HOUSE
A JW MARRIOTT HOTEL
LONDON



For the grandest occasion.
For the most important event.

Adding sparkle

to every occasion



THE GREAT ROOM

Beautifully elegant events

For elegance, flexibility and sheer quality, Grosvenor House, A JW Marriott Hotel, is an unrivalled destination.

Together with 86 Park Lane, our dedicated function suite and business centre, we offer a world-class range of venues for every kind of event. Whether it is a magical wedding reception,

a glitzy award ceremony, or an important business conference, we can transform our rooms to create the perfect setting for you and your guests.

There is the dramatic Great Room, with capacity for up to 2,000 guests, the glamorous Ballroom and a further 31 function suites. To ensure every aspect of your event is a success, our dedicated event planning team will be with you from start to finish.

THE BOURDON SUITE



Meetings and conferences

At 86 Park Lane you and your colleagues will be supported by our dedicated team of professionals. We are always on hand to provide everything you need for a successful and productive meeting. Should you have any last minute changes or special requests, your Event Concierge will be available throughout the day as your main point of contact.

THE BALLROOM



86 PARK LANE



Meetings & conferences

86 Park Lane is manned by our dedicated team of professionals who are able to provide everything you might need for a successful and productive full day meeting. Your Event Concierge will be your main point of contact throughout the day, and is available to you should you have any last minute changes or special requests

Meetings & events - quick reference guide

Guest Room & Suite Information

- 494 Bedrooms and Suites:
 - 161 Deluxe Bedrooms
 - 213 Superior Bedrooms
 - 46 Executive Bedrooms
 - 74 Suites
- Connecting rooms available

Guest Room Facilities

- Climate control AC
- Bathrobes
- TV/ Satellite / On-demand movie system
- Fire alarms / sprinklers
- Telephone - two lines & Internet modem access
- Desk
- High speed Internet access - wired and wireless
- Private bar
- Dual voltage electrical sockets (240 / 110 volts)
- Bath tub & shower
- Hairdryer
- 24 hour in room dining
- Iron and ironing board
- In room safe

Executive Floor & Lounge

Services available to guests staying in Executive Rooms & all Suites

- Located on the 7th floor
- Private Check In / Out
- Executive Club Lounge
- Dedicated Executive Club team
- Light breakfast
- Refreshments throughout the day
- Evening cocktails & canapés
- Upgraded guest room amenities
- Wireless connectivity in Lounge
- Shower facilities

Restaurants & Bars

- JW Steakhouse
- The Park Room & Champagne Bar
- The Library
- The Red Bar
- Park Lane Market
- Corrigan's Mayfair
- 24 hour room service

Conference & Banqueting Facilities

- 61,354 square feet (5,700 square metres) of space
- 31 Private rooms
- The Great Room
- The Ballroom
- In-house production team
- Grosvenor House Mobile App
- Dedicated Banqueting & Events Team
- Wireless connectivity

Additional Facilities & Services

- 24 hour Business Centre
- Fitness Suite
- Car Park (90 spaces)
- Gift Shop
- Guest Relations & Concierge
- Sanrizz Hair Salon

Climate

London has a mild climate, with day-time temperatures ranging from an average of 22 degrees Celsius (71 degrees Fahrenheit) in the Summer, to 7 degrees Celsius (44 degrees Fahrenheit) in the Winter.

City Attractions

London offers a wealth of cultural & historical experiences. World class art, theatre, museums, music and attractions are available throughout the year.

A brief overview of some of London's key attractions:

Historical Sights

- Buckingham Palace
- Houses of Parliament
- Piccadilly Circus
- Trafalgar Square
- Tower of London
- Westminster Abbey
- St Paul's Cathedral
- Hampton Court Palace

Attractions

- Globe Theatre
- Madame Tussauds
- London Eye
- Kew Gardens
- Hyde Park

Museums & Art Galleries

- British Museum
- National Gallery
- National Portrait Gallery
- Tate Britain
- Tate Modern
- Victoria & Albert Museum
- Natural History Museum
- Science Museum
- Imperial War Museum
- Saatchi Gallery
- Serpentine Museum

Activities & Entertainment

- West End Theatres
- Royal Opera House
- Royal Albert Hall
- Sadlers Wells Theatre
- Street Markets - including; Portobello Road, Camden, Borough & Spitalfields
- Shopping - key districts include; Knightsbridge, Oxford Street, Bond Street, Regent Street, Covent Garden, Kings Road & Kensington
- Sporting & Cultural Events - including; Wimbledon Lawn Tennis Championships, Royal Ascot, Henley Regatta, Oxford & Cambridge Boat Race, Chelsea Flower Show

Day Trips

London is perfectly positioned to explore a number of key cities and historic sites, including;

- Oxford
- Windsor Castle
- Cambridge
- Leeds Castle
- Bath
- Stonehenge
- Stratford Upon Avon
- Brighton
- York

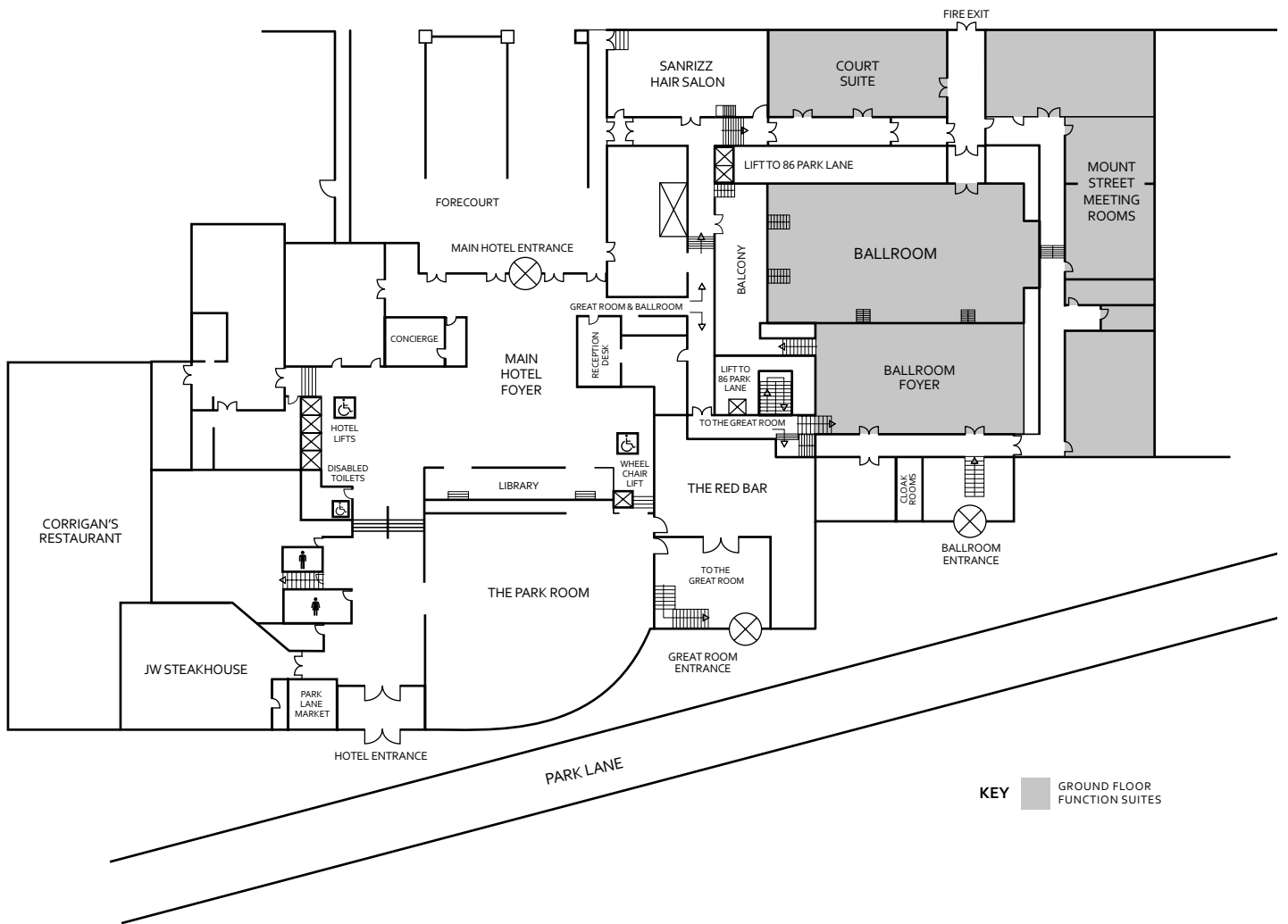
Further details on London & Great Britain can be found at www.visitlondon.com & www.visitbritain.com

Destination Facts & Tips

- Currency - British Pounds (£1 = 100 pence)
- Tax - Referred to as VAT (value added tax). VAT refunds are available on some items - shops carry details on these and procedures to reclaim.

Hotel Plan

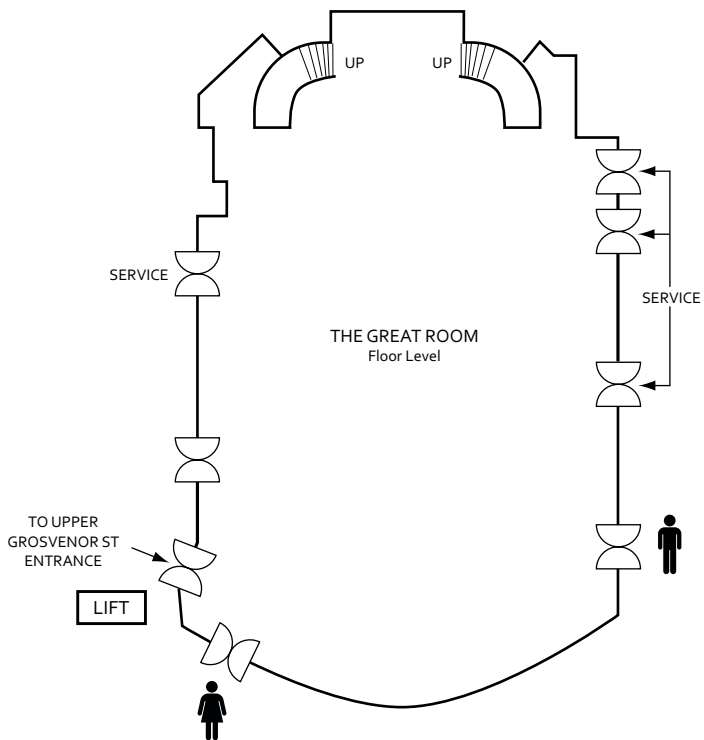
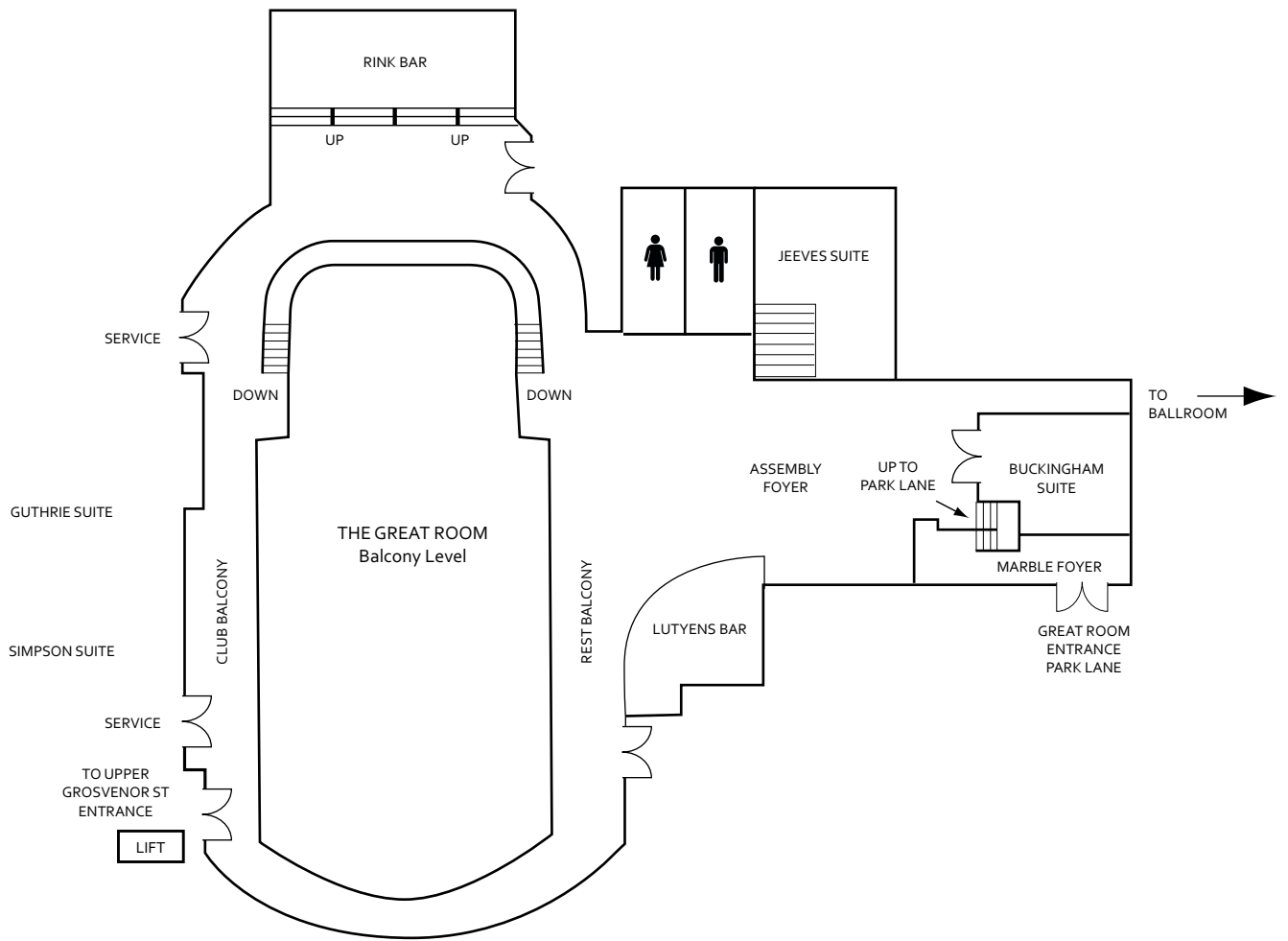
PARK STREET



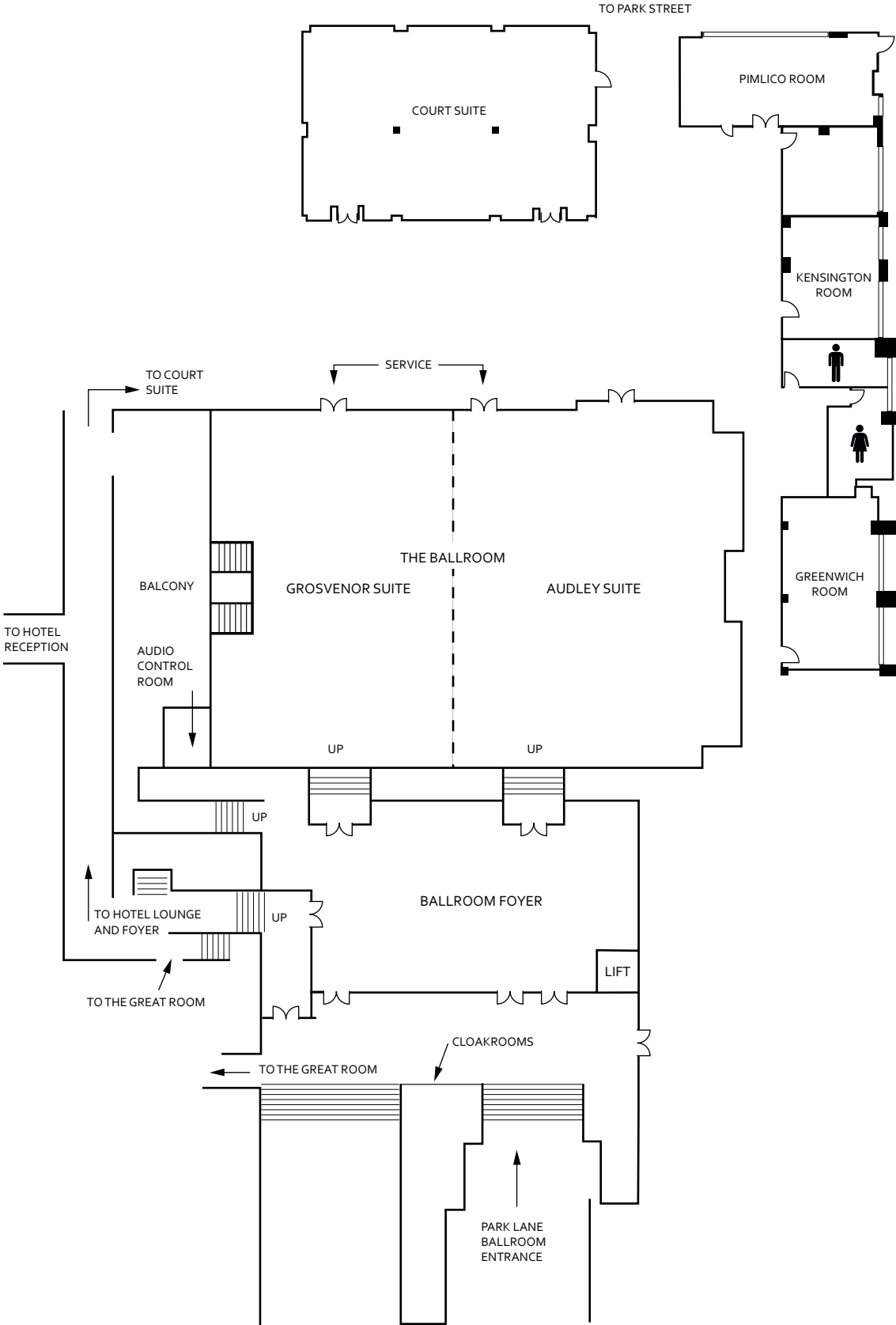
[Open here for additional floor plans and capacities.](#)

All plans indicative of layout only. Not to scale.

Great Room – Lower Ground Floor



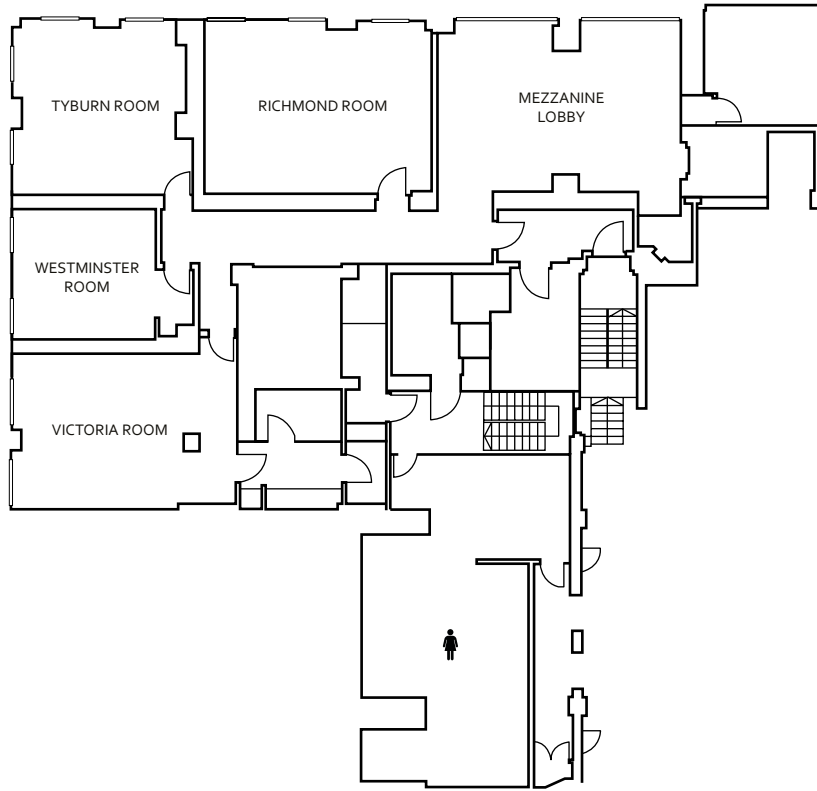
Ballroom and Mount Street – Ground Floor



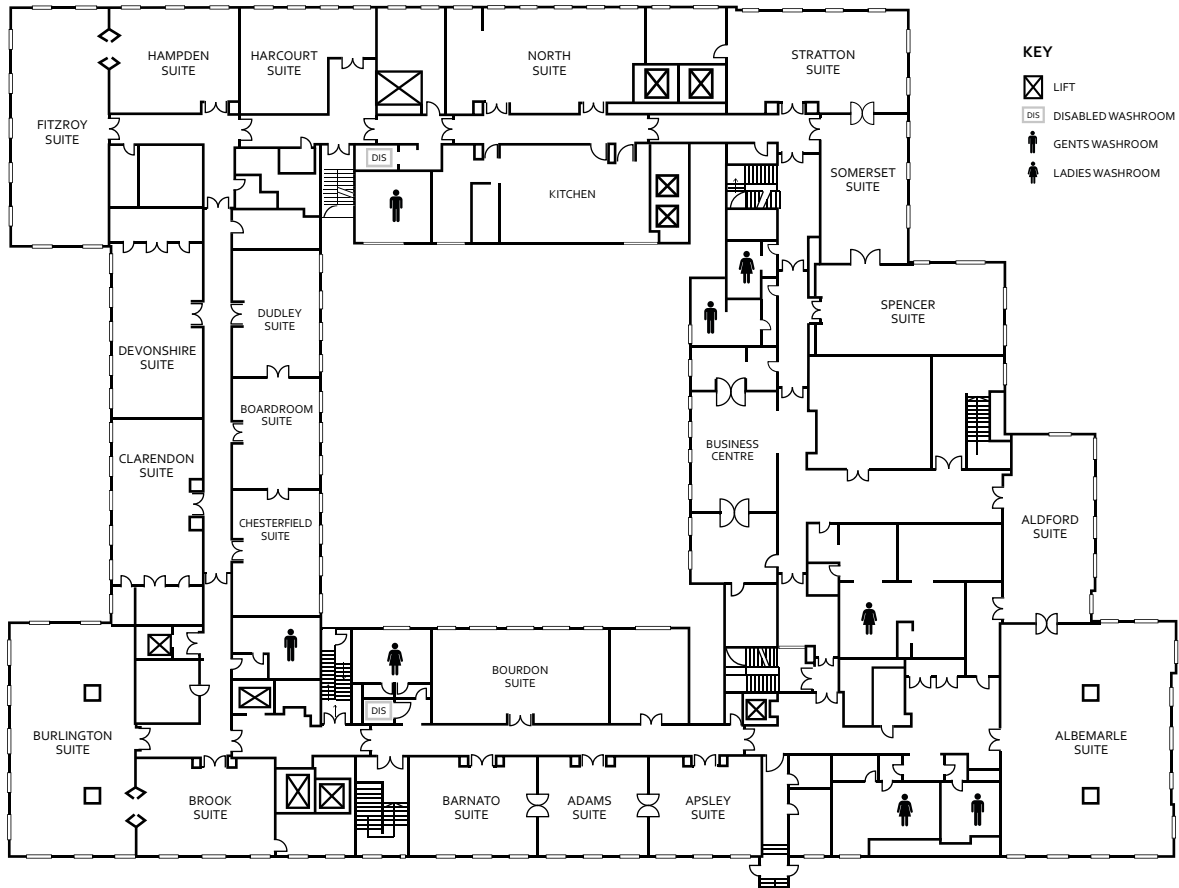
All plans indicative of layout only. Not to scale.

Floor Plans and Capacities

Mount Street – Mezzanine Floor



86 Park Lane – First Floor



Capacities

Meeting Room	DIMENSIONS		CAPACITY										
	LxW(Mt)	Sq. Mt.	Lunch/ Dinner	Awards Dinner	Dinner Dance	Reception	Theatre FP BP	Classroom FP BP	Boardroom	Cabaret FP BP	U-Shape		
Great Room (Total)		3147	2000	1750	1550	2000	1300 1000	700 600	140	1100 900	–		
Ballroom (Total)	29.5 x 19.3	900	550	500	450	1000	550 450	260 200	60	240 210	80		
Audley Suite	17.93 x 15.9	285	250	180	190	400	250 200	120 100	44	140 100	60		
Grosvenor Suite	17.93 x 13.88	249	200	140	140	400	200 150	100 80	44	100 80	40		
Court Suite	16.6 x 10.3	171	190	–	120	250	180 –	70 –	40	66 –	48		
Pimlico	10.77 x 4.94	53	36	–	–	50	50 –	30 –	20	24 –	20		
Kensington	6.27 x 5.33	33	30	–	–	36	30 –	14 –	14	12 –	12		
Greenwich	9.86 x 5.74	57	36	–	–	50	50 –	30 –	20	24 –	20		

FP – Front projection BP – Back projection

Meeting Room	DIMENSIONS		CAPACITY						
	LxW(Mt)	Sq. Mt.	Lunch/Dinner	Cocktail Reception	Reception	Boardroom	Theatre	Classroom	Cabaret
Richmond	7.7 x 5.9	45	–	–	–	12	30	14	15
Tyburn	5.9 x 5.8	34	–	–	–	14	24	14	15
Victoria	7.5 x 5.2	39	–	–	–	12	24	14	15
Westminster	4.9 x 4.4	21	–	–	–	10	–	–	–

Meeting Room	DIMENSIONS		CAPACITY					
	LxW(Mt)	Sq. Mt.	Lunch/ Dinner	Cocktail Reception	Boardroom	Theatre	Classroom	U-Shape
Adams	6.7 x 6.1	40	20	30	14	30	12	12
Albemarle	13.9 x 10.8	150	110	110	32	110	50	32
Aldford	11.8 x 5.6	66	36	50	20	50	30	20
Apsley	6.9 x 6.1	42	20	30	14	30	12	12
Barnato	7.9 x 6.1	48	24	30	14	30	14	12
Boardroom	6.2 x 5.3	32	20	29	10	20	12	10
Bourdon	11 x 5.8	64	36	40	20	40	24	20
Brook	8.2 x 6.1	50	24	35	16	26	12	14
Burlington	13.9 x 7.3	99	70	70	32	80	36	32
Chesterfield	7.6 x 5.3	40	20	30	12	24	18	10
Clarendon	10.3 x 5.3	54	36	45	20	42	24	20
Devonshire	10.8 x 5.3	57	36	45	20	40	20	14
Dudley	7.9 x 5.3	41	24	30	14	26	12	12
Fitzroy	14.5 x 5.9	85	60	70	30	60	28	30
Hampden	7.5 x 6.4	48	24	30	14	32	12	14
Harcourt	6.1 x 5.6	34	12	20	10	30	–	–
North	11.5 x 6.2	71	36	50	20	48	24	20
Somerset	9.5 x 5.2	49	30	36	14	30	20	15
Spencer	11.9 x 5.4	64	40	45	20	42	20	20
Stratton	10.8 x 6.1	65	36	45	20	42	20	20

Accommodations

420 rooms and 74 suites.

Guest Services

Business Centre, car parking and hairdressing salon.

Restaurants & Lounges

JW Steakhouse, Park Lane Market, The Park Room & Champagne Bar, The Library, The Red Bar, Corrigan's Mayfair.

Recreation & Leisure

Fitness Suite.

Attractions

Ideal location for the West End – Oxford Street, Knightsbridge, Buckingham Palace and Piccadilly. Perfectly placed for West End theatres, South Kensington for museums and key business districts. Hyde Park opposite the hotel for walks around the Serpentine Gallery and Kensington Gardens.

Meeting Facilities

31 function suites, meeting and banqueting rooms, seating up to 2000 guests. The Great Room is one of Europe's unique, largest and most impressive ballrooms.

Directions

Grosvenor House is minutes walk from Marble Arch, Hyde Park Corner, and Bond Street underground stations.

Heathrow Airport: Heathrow Express 15 minutes from Paddington Station, 10 minutes drive from the hotel.

Taxi, allow 1 hour.

Gatwick Airport: Gatwick Express 30 minutes from Victoria Station, 10-15 minutes drive from the hotel.

Taxi, allow 2 hours.

Stansted Airport: Train 40 minutes from Liverpool Street Station, 40 minutes drive from the hotel. Taxi, allow 2 hours.

London City Airport: Coach 30 minutes. Underground, 40 minutes. Taxi, allow 40 minutes.

St Pancras International: Eurostar and national train departures. Underground, 20 minutes. Taxi, allow 20 minutes.



Grosvenor House, A JW Marriott Hotel

Park Lane, London, W1K 7TN

Phone +44 (0)20 7499 6363

Fax +44 (0)20 7493 3341

londongrosvenorhouse.co.uk

