



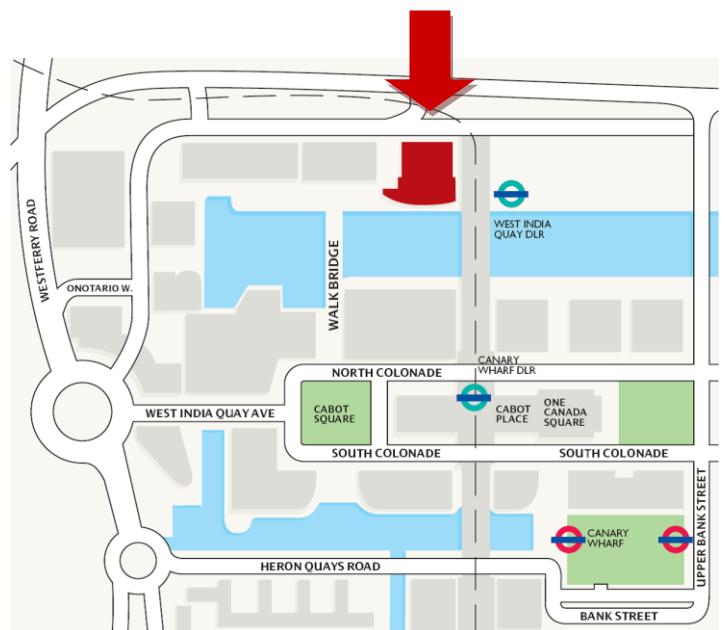
Marriott Executive Apartments London, Canary Wharf

Casting a striking image upon London's vibrant Canary Wharf, our serviced apartments include thoughtful designs so you can enjoy home-like comforts along with the luxury of intuitive hotel service. Marriott Executive Apartments London, Canary Wharf welcome guests with contemporary studios, as well as one and two-bedroom apartments.

Whether travelling to Canary Wharf for business or pleasure, our serviced apartments will fit your style with convenient 24-hour room service and grocery shopping available so you can spend your day as you like. We are situated near:

Attractions & Landmarks

- The O2
- ExCeL London
- West End (20 minutes by tube)
- Canary Wharf
- Westfield Shopping Centre
- Royal Observatory Greenwich
- Queen Elizabeth Olympic Park
- River Thames Cruise
- Greenwich Market
- Billingsgate Market
- Tower Bridge



Transportation

- Nearest Airport: London City Airport
- 2nd Nearest Airport: London Heathrow
- Nearest Train Station: Liverpool Station
- Nearest Bus Station: Canary Wharf
- Nearest Tube Stations: West India Quay (DLR) & Canary Wharf (Jubilee Line)



Marriott Executive Apartments London, Canary Wharf
22 Hertsmeare Road, London E14 4ED

Tel: +44 (0)207 093 1000
Fax: +44 (0) 207 093 1001

Web: LondonMarriottExecutiveApartments.co.uk

Facilities and Services



- Round-the-clock staff
- Minimum three times a week housekeeping service
- Grocery delivery and laundry service
- Complimentary use of washer and dryer
- High-Speed wireless Internet
- Off-Site parking
- Business Centre
- 24-Hour Concierge
- 24-Hour Room Service
- Fitness Centre and Sauna
- Manhattan Grill Restaurant
- G&Tea Lounge



Frequent Traveller Program

Marriott Executive Apartments participate in Marriott's award-winning frequent travel program. For every 3 nights stayed, Marriott Bonvoy members earn 1 Elite night credit and 2.5 points per US Dollar spent in accommodation only. No Elite benefits apply.

Studio Apartment

Size: 45 sqm / 484 sqft

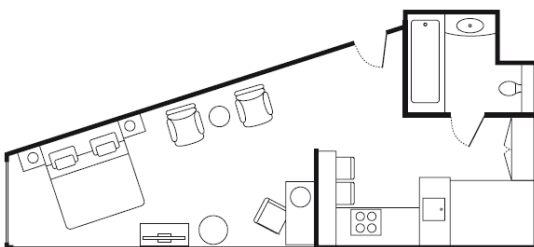
4 Apartments with King Bed, Living/sitting area

Fully equipped kitchen (refrigerator, stove, oven, microwave, dishwasher, dishware and utensils)

Bath and shower

Floor to ceiling windows

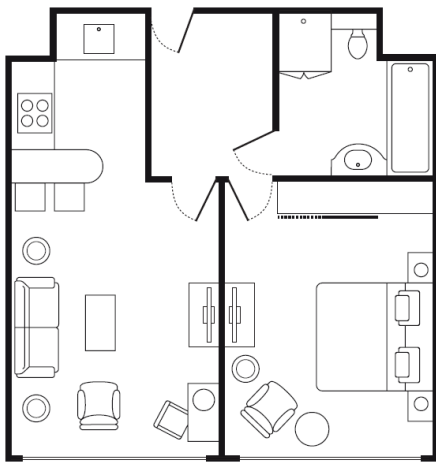
Amenities: Dedicated work area and desk, Double telephone lines with voicemail and private line, High-speed wireless internet, Marriott bedding with mattress toppers, 300 thread count Egyptian cotton duvets and six pillows, Flat screen TV, DVD Player, Tea and coffee making facilities, In room safe, Iron / Ironing board, Hair dryer, Same day laundry service.





EXECUTIVE APARTMENTS
LONDON CANARY WHARF

One-bedroom Apartment



Size: 56 sqm / 603 sqft

39 Apartments with King Bed, separate living area

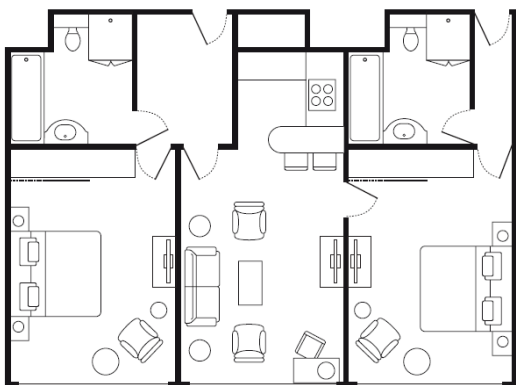
Fully-equipped kitchen (refrigerator, stove, oven, microwave, dishwasher, dishware and utensils)

Bath and separate shower

Floor-to-ceiling windows

Amenities: Dedicated work area and desk, double telephone lines with voicemail and private line, high-speed wireless internet, Marriott bedding with mattress toppers, 300 thread count Egyptian cotton duvets and six pillows, flat screen TV, DVD Player, tea and coffee making facilities, in-room safe, iron / ironing board, hair dryer, same-day laundry service.

Two-bedroom Apartment



Size: 91 sqm / 979 sqft (approximately)

4 Apartments with King Bed, Separate living area

Fully equipped kitchen (refrigerator, stove, oven, microwave, dishwasher, dishware and utensils)

Bath and separate shower

Floor to ceiling windows

Amenities: Dedicated work area and desk, double telephone lines with voicemail and private line, high-speed wireless internet, Marriott bedding with mattress toppers, 300 thread count Egyptian cotton duvets and six pillows, flat screen TV, DVD Player, tea and coffee making facilities, in-room safe, iron / ironing board, hair dryer, same-day laundry service.

Marriott Executive Apartments London, Canary Wharf
22 Hertsmeare Road, London E14 4ED

Tel: +44 (0)207 093 1000

Fax: +44 (0) 207 093 1001

Web: LondonMarriottExecutiveApartments.co.uk



EXECUTIVE APARTMENTS
LONDON CANARY WHARF

MANHATTAN GRILL WEST INDIA QUAY



Manhattan Grill

Enjoy the finest steaks cooked to perfection, served with no fuss, no gimmicks... and that's no bull!

Set in a modern atmosphere overlooking the West India Quay marina, Manhattan Grill offers the ultimate Canary Wharf steakhouse experience with its prime USDA and Scottish cuts paired with the finest wines from the Baron de Rothschild Estates.

For reservations call 0207 517 2808



G&Tea Lounge

G&Tea has a relaxed mood by day and a vibrant air by night. Perfect for afternoon tea, a reviving cocktail, a light snack or meal, this unique Canary Wharf bar & lounge is an ideal place for unwinding and recharging or for an informal gathering.

Discover our extensive collection of over 180 types of gin or join us for a handcrafted cocktail.

The elegant terrace is a recommended venue for social gatherings, wedding receptions or corporate functions between April and October.

For reservations call 0207 517 2858



Marriott Executive Apartments London, Canary Wharf
22 Hertsme Road, London E14 4ED

Tel: +44 (0)207 093 1000
Fax: +44 (0) 207 093 1001

Web: LondonMarriottExecutiveApartments.co.uk