



DIRECTIONS AND TRANSPORTATION

EDINBURGH MARRIOTT HOTEL

111 Glasgow Road, Edinburgh, EH12 8NF, Scotland, UK

+44 (0)131 334 9191

www.EdinburghMarriott.co.uk





TRAVEL BY AIR

FROM EDINBURGH INTERNATIONAL AIRPORT

The hotel is 2 miles towards city centre on A89 Airport Road

- Taxi ranks are available at the airport
- Airlink Express Bus services 100 and 200 stop directly opposite the hotel and depart every 10 minutes
- Tram service stops near the hotel are Edinburgh Gateway or Gyle Centre; please note there is a short walk of 8 minutes to the hotel from these stops



TRAVEL BY RAIL

Waverley Station – 4 miles

- Exit station on Princes Street
- Travel West out of town on A8
- The hotel is on your left 4 miles out of town on A8

Airlink 100 Express bus departs directly opposite Waverley Station. There will be announcements for each stop. For the hotel, you will depart at the Maybury stop.

Taxi rank areas are available at the station exit.

Edinburgh Gateway Station – 0.3 mile

This station is a 7 minute walk from the hotel servicing Fife, Perth, Dundee and Inverness.

Haymarket Station – 3 miles

- Exit station
- Travel West out of town on A8
- The hotel is on your left 3 miles out of town on A8

Airlink 100 Express bus departs directly opposite Waverley Station. There will be announcements for each stop. For the hotel, you will depart at the Maybury stop.

Taxi rank areas are available at the station exit.

South Gyle Station – 1 mile

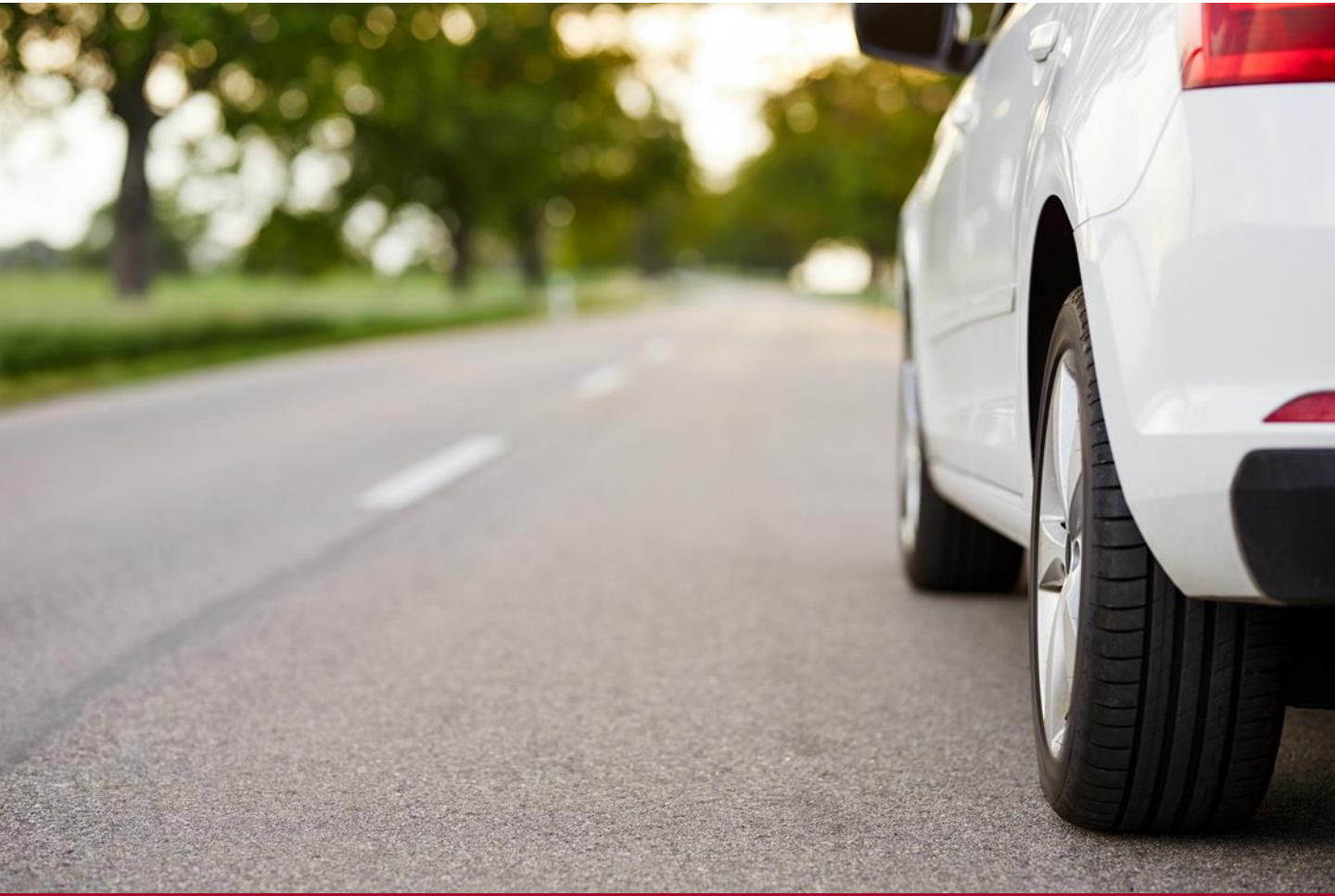
This station is a 10 minute walk from the hotel servicing Fife and North Queensferry.



TRAVEL BY CAR

FROM THE NORTH

- Over the Forth Bridge, follow signs for Edinburgh city centre on dual carriageway until you get to a large junction at the Barnton Interchange
- Take a right, following signs for Edinburgh Airport and Glasgow
- Go straight over the next roundabout continuing until you approach the next set of traffic lights where there is a garage on your left (yellow Shell garage)
- Turn left here and we are situated on your immediate right



TRAVEL BY CAR

FROM THE SOUTH & EAST (A1, A74, A701 & A702)

- Join city bypass (A720) following signs for Glasgow and Edinburgh airport
- Follow the dual carriageway to its end at Gogar roundabout (junction with the A8)
- Turn right at roundabout and follow signs for Edinburgh city centre
- Move into the right hand lane and the hotel is situated on the right-hand side just through the next set of traffic lights



TRAVEL BY CAR

FROM THE WEST

- Join the city bypass (A720) from Junction 1 off the M8 (city bypass north). Follow the dual carriageway to its end
- At Gogar roundabout (Junction with A8) turn right at the roundabout following signs for Edinburgh city centre
- Move into the right hand lane and the hotel is situated on the right-hand side just through the next set of traffic lights