



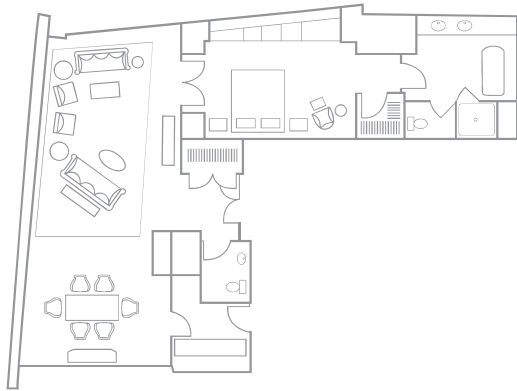
## MAKING A SPLASH ON BOSTON'S WATERFRONT

Venture outside the ordinary with the Renaissance Boston Waterfront Hotel. Located in Boston's vibrant Seaport District, this exclusive destination features six contemporary suite types with breathtaking ocean vistas, water-inspired decor and luxurious amenities. Join us in Capiz Lounge showcasing curated beverages and seasonal local fares, take a dip in our indoor lap pool or re-energize at our fitness center. When you're ready to explore, enjoy easy access to such famed attractions as the Institute of Contemporary Art, Faneuil Hall Marketplace and the Boston Harbor Islands.

RENAISSANCE BOSTON WATERFRONT HOTEL • 606 Congress Street, Boston, MA 02210  
t: 617.338.4111 f: 617.338.4138

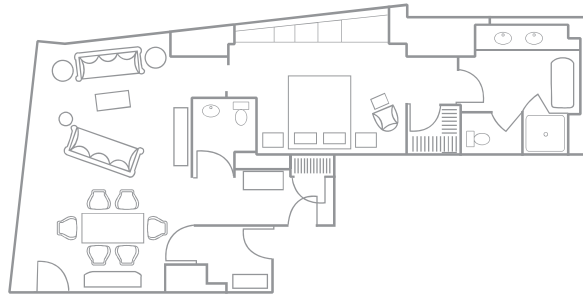
[renaissanceboston.com](http://renaissanceboston.com)

**R**  
**RENAISSANCE**<sup>®</sup>  
BOSTON WATERFRONT HOTEL



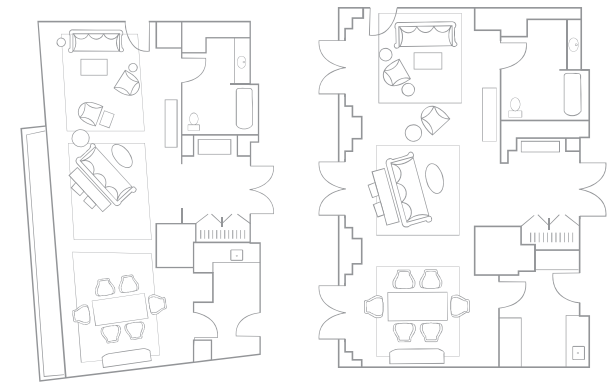
**PRESIDENTIAL SUITE** (1 Available/Floor 21)

650-square-foot parlor with living area including sofa bed and dining table for 6 • Amazing ocean and city views • Half bathroom in parlor area • 49" HDTV with connectivity panel for laptops and MP3 players • Full bar with sink, mini refrigerator and separate service entrance • Wireless internet access • Attached king bedroom • Master bath with sunken tub, shower and double sinks • 1 additional connecting king bedroom available



**VICE PRESIDENTIAL SUITE** (3 Available/Floors 18, 19 & 20)

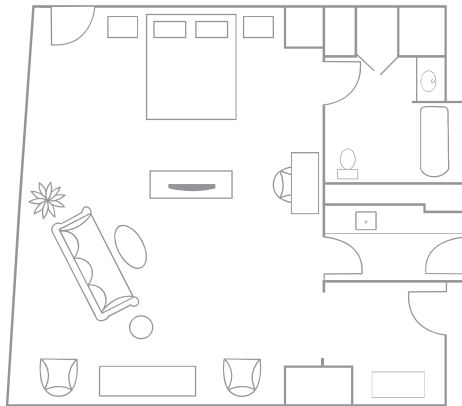
400-square-foot parlor with dining table for 6 and comfortable living area with sofa bed • Half bathroom in parlor area • 49" HDTV with connectivity panel for laptops and MP3 players | Full bar with sink, mini refrigerator and separate service entrance • Wireless internet access • 1 attached king bedroom • Master bath with sunken tub, shower and double sinks • Sweeping harbor and city views • 1 additional connecting bedroom available



Suites available with or without patio access.

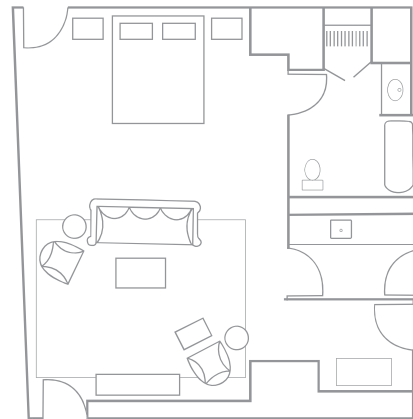
**3-BAY HOSPITALITY SUITE** (2 Available/Floors 5 & 12)

650-square-foot parlor with living area including sofa bed and dining table for 6 • 5<sup>th</sup>-floor suite has 300-square-foot walkout patio overlooking eco-friendly garden • 12<sup>th</sup>-floor suite has breathtaking ocean views • Full bar with sink, mini refrigerator and separate service entrance • Full bathroom • 49" HDTV with connectivity panel for laptops and MP3 players • Wireless internet access • 1 connecting king bedroom



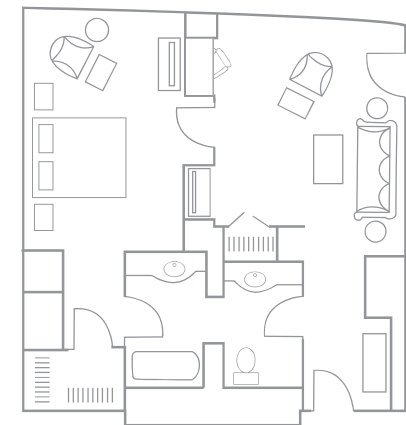
**EXECUTIVE SUITE** (5 Available/Floors 5, 15 & 17)

400-square-foot suite with large seating area and king bed • Full bar with sink, mini refrigerator and separate service entrance • Full bathroom • 42" HDTV with connectivity panel for laptops and MP3 players • Wireless internet access • Dramatic harbor views



**LUXURY SUITE** (2 Available/Floors 19 & 21)

400-square-foot suite with king bed, large seating area and sofa bed • Full bar with sink, mini refrigerator and separate service entrance • Full bathroom • 49" HDTV with connectivity panel for laptops and MP3 players • Wireless internet access • Stunning harbor views • 1 connecting king bedroom and 1 connecting double bedroom



**DELUXE KING SUITE** (8 Available/Floors 6–11)

200-square-foot parlor with sofa bed • Mini refrigerator • Full bathroom • 49" HDTV with connectivity panel for laptops and MP3 players • Wireless internet access • Spectacular city views • 1 connecting king bedroom • 1 additional connecting bedroom available

RENAISSANCE BOSTON WATERFRONT HOTEL • 606 Congress Street, Boston, MA 02210

t: 617.338.4111 f: 617.338.4138

renaissanceboston.com