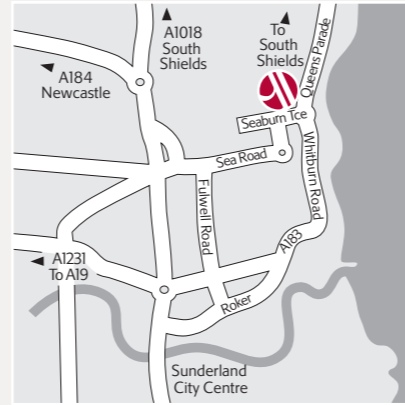


Queens Parade, Seaburn,
Sunderland SR6 8DB
Tel 0870 400 7287
Fax 0870 400 7387
SunderlandMarriott.co.uk
Map ref 72



Directions

All routes: Continue for 3 miles through Boldon. Straight through traffic lights, past the Regal Stadium. At next roundabout turn left and follow road to coast. Turn right; hotel is on right off roundabout.



This luxurious hotel has a unique setting overlooking wide sandy beaches with spectacular views across the North Sea. It is ideally located for shopping at the MetroCentre and visiting historic Durham or the Beamish Open Air Museum. The hotel has a flexible range of conference and meeting facilities ranging from the 300 delegate Castles Suite to the boardroom, suitable for private dining and smaller meetings.

Accommodation

- 82 bedrooms including 2 disabled bedrooms
- The Marriott Bedroom (see page 5)

Additional features

- Partially Air conditioned bedrooms
- Mini bar in bedrooms
- 24hr room service
- Laundry service
- Safe deposit at reception
- Secretarial services
- At least one WIFI hotspot in public areas
- Shoe shine in public areas
- Ice machines in public area
- Concierge

Conference & Event facilities

- 5 dedicated conference & meeting rooms
- Max. no. of delegates 300 theatre style
- Marriott Communication Solutions

Restaurants & lounges

- The Promenade Restaurant: Offers superb modern cuisine.
- The Mariner Bar: With fabulous views of the sea, the bar is comfortable and has a friendly atmosphere

Leisure facilities

Complimentary: Indoor heated pool, spa bath, sauna, steam room, gymnasium & relaxation area.

Car parking

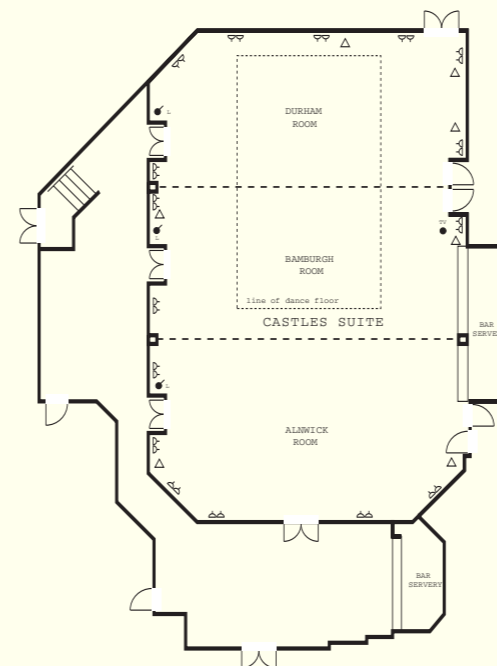
100 free car parking spaces available for guests.

Additional Marriott Hotels in the North East include:

- Durham Marriott Hotel Royal County
- Newcastle Marriott Hotel Gosforth Park (see page 48)
- Newcastle Marriott Hotel MetroCentre (see page 50)



The Castles Suite can accommodate 300 guests, has air-conditioning, an adjoining reception area, private bar and dance floor, and has direct access to the car park for loading and off-loading equipment. It has the flexibility to be divided by sound proof partitions into 3 separate rooms – the Alnwick, Bamburgh and Durham – each room can accommodate up to 80 people.



Castles Suite (1, 2, & 3) LxWxH (M) 21.3 x 12.4 x 3.6	Bamburgh Room (2) LxWxH (M) 6.1 x 12.4 x 3.6
Alnwick Room (1) LxWxH (M) 7.6 x 12.4 x 3.6	Durham Room (3) LxWxH (M) 7.7 x 12.4 x 3.6

	ROOM CAPACITIES (NO. OF DELEGATES)											
	THEATRE STYLE (FRONT PROJECTION)	THEATRE STYLE (BACK PROJECTION)	THEATRE STYLE (NO PROJECTION)	CLASSROOM STYLE	U-SHAPE	BOARDROOM STYLE	CABARET STYLE (FRONT PROJECTION)	CABARET STYLE (BACK PROJECTION)	CABARET STYLE (NO PROJECTION)	BUFFET RECEPTION	DINNER/DANCE	DINNER
Castles Suite (1, 2, & 3)	300	200	300	70	70	100	120	96	120	250	180	200
Alnwick Room (1)	80	-	80	30	40	40	48	-	48	80	-	60
Bamburgh Room (2)	80	-	80	30	40	40	48	-	48	80	-	60
Durham Room (3)	80	-	80	30	40	40	48	-	48	80	-	60

For key to symbols see page 65