

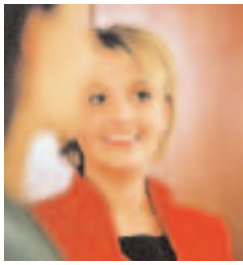
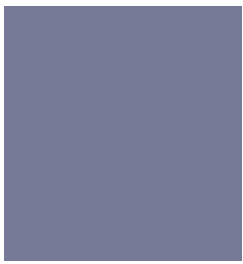
140 Park Lane “the best hotel newcomer” THE TIMES



Elegant. Intimate. Refreshing. The Marriott Park Lane is the newest addition to London's most distinguished avenue. Standing outside you could mistake its grand façade for an apartment block on the Champs Elysées, Paris. And once inside you won't be disappointed. With its understated styling and casual air of tranquillity, this is a space in which to linger. To view the city at your leisure... stroll through Hyde Park... indulge in a spot of shopping... or just bask in the bright lights of the West End... then return and refresh. Welcome to the new Marriott Park Lane.

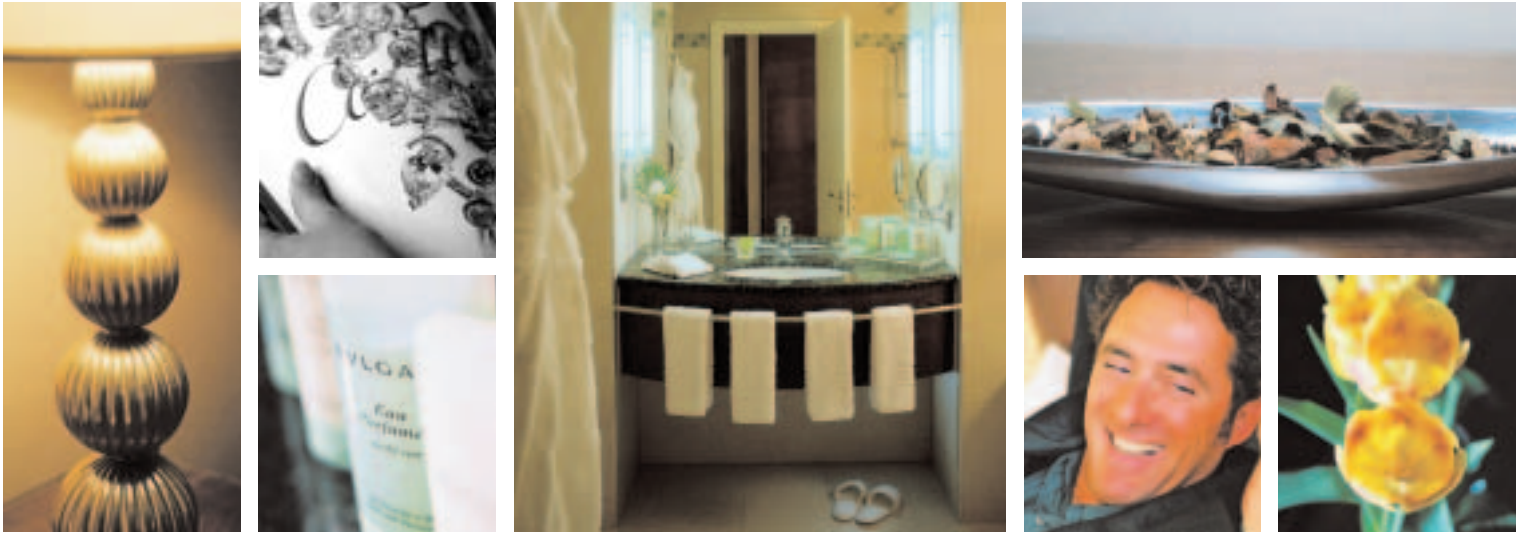
*Pictures bottom left to right: Marble Arch, Burlington Arcade (Mayfair)*





The sleek and stylish lobby is the perfect introduction to the unique charms of the Marriott Park Lane. The contemporary styling blends spacious minimalism with flashes of exuberance... beautiful and exotic flowers compliment the light, modern interior... and the fresh, friendly ambience is unlike anything else on Park Lane.

Only the finest fabrics and furnishings have been used to create each room. And with just 157 of them, each one benefits from our dedicated care and attention. Exceptionally comfortable, quiet and fitted with all the latest technology, this is the perfect retreat from the bustle of the city.



Each room comes equipped with everything from streaming digital CDs and movies to high speed internet access and cordless phones. And to keep you looking and feeling your best we've added 6ft beds with plump pillows, cosy comforters and beautiful large bathrooms.





Revel in the select surroundings of our exclusive suites and Park View room – the definition of luxury... take in the beautiful views across the wooded gardens of Hyde Park... unwind in the private Club Lounge... sit back, and enjoy the very best Mayfair has to offer.



Every suite comes complete with a corner park view and exclusive access to our private Club Lounge. Here you can enjoy complimentary refreshments and make use of the private boardroom available for up to 8 people.

**1. Hyde Park Suites**  
(North West facing)

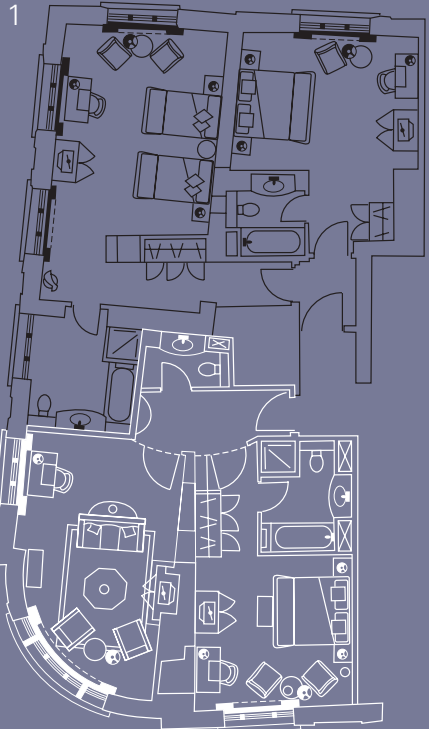
Suites include living room, one bedroom with king size bed, bathroom ensuite and separate lavatory. Two bedrooms which connect are adjacent to the suite

- 1st Floor - Camelford Suite
- 2nd Floor - Somerset Suite
- 3rd Floor - Nash Suite
- 4th Floor - Marble Arch Suite

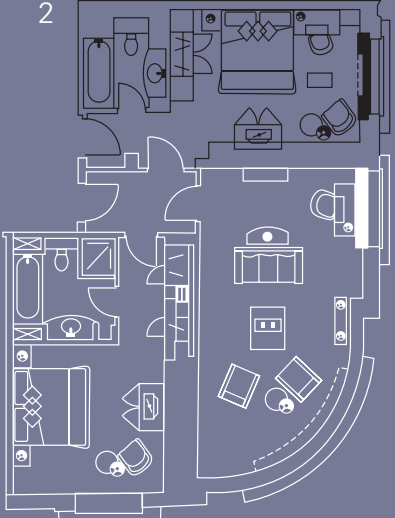
**2. Hyde Park Suites**  
(South West facing)

Suites include living room, bedroom with king sized bed and bathroom ensuite.

- 1st Floor - Verity Suite\*
- 2nd Floor - Hastings Suite \*
- 3rd Floor - Royal Suite\*
- 4th Floor - Berkeley Suite
- 5th Floor - Mayfair Suite



Connecting rooms indicated with black keylines can be booked in addition to the Suites\*





Fusing the flavours of modern British and European cuisine, 140 Park Lane brasserie is renowned for its expressive menu and buzzing atmosphere. Each dish is infused with the creativity and flair unique to an award winning chef. With views across Marble Arch and Hyde Park, 140 Park Lane is the perfect setting for exceptional dining in every sense.

Entertain and unwind with a classic cocktail at the 140 Park Lane Bar... sample our very own 140 Crantini cocktail with rare white cranberry juice... dip into our authentic selection of hors d'oeuvres... soak up the vibrant atmosphere... and simply go with the flow.



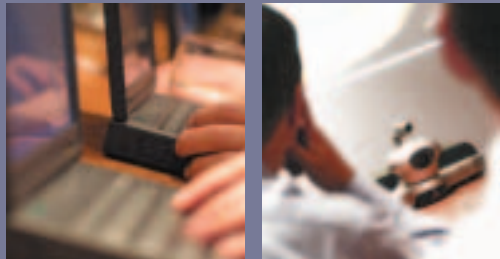
The private and intimate meeting rooms at the Marriott Park Lane are the perfect location for important engagements. A floor away from the rest of the hotel, you're assured absolute confidentiality. Leaving you free to focus on what really matters.



Oxford Suite 3



The Boardroom



The Hyde Park Suite

The prestigious meeting rooms at the Marriott Park Lane feature the most advanced technology found in any London hotel including data port connections for modem or fax hook ups, high speed internet access, video conferencing and speakerphone facilities. Nothing has been overlooked.





The art of relaxation...



The Marriott Park Lane: To experience is to appreciate.

Invigoration and relaxation go hand in hand at The Club at Park Lane. First energise and work-out in the fully equipped fitness room. Then lose yourself in the tranquillity of the indoor pool. And soothe away your strains in the enhanced steam 'cave'. It's sublime.

Treat your body to the pampering it deserves at The Club. Push your limits with one of our personal trainers. Embark on a guided run through Hyde Park and really feel the difference. It's all about you.





140 Park Lane, London W1K 7AA

Tel 44 (0) 20 7493 7000

Fax 44 (0) 20 7493 8333

email. [mhrs.parklane@marriotthotels.com](mailto:mhrs.parklane@marriotthotels.com)

[www.marriott.com/lonpl](http://www.marriott.com/lonpl)