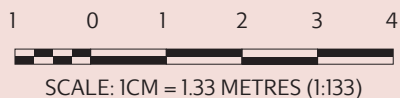
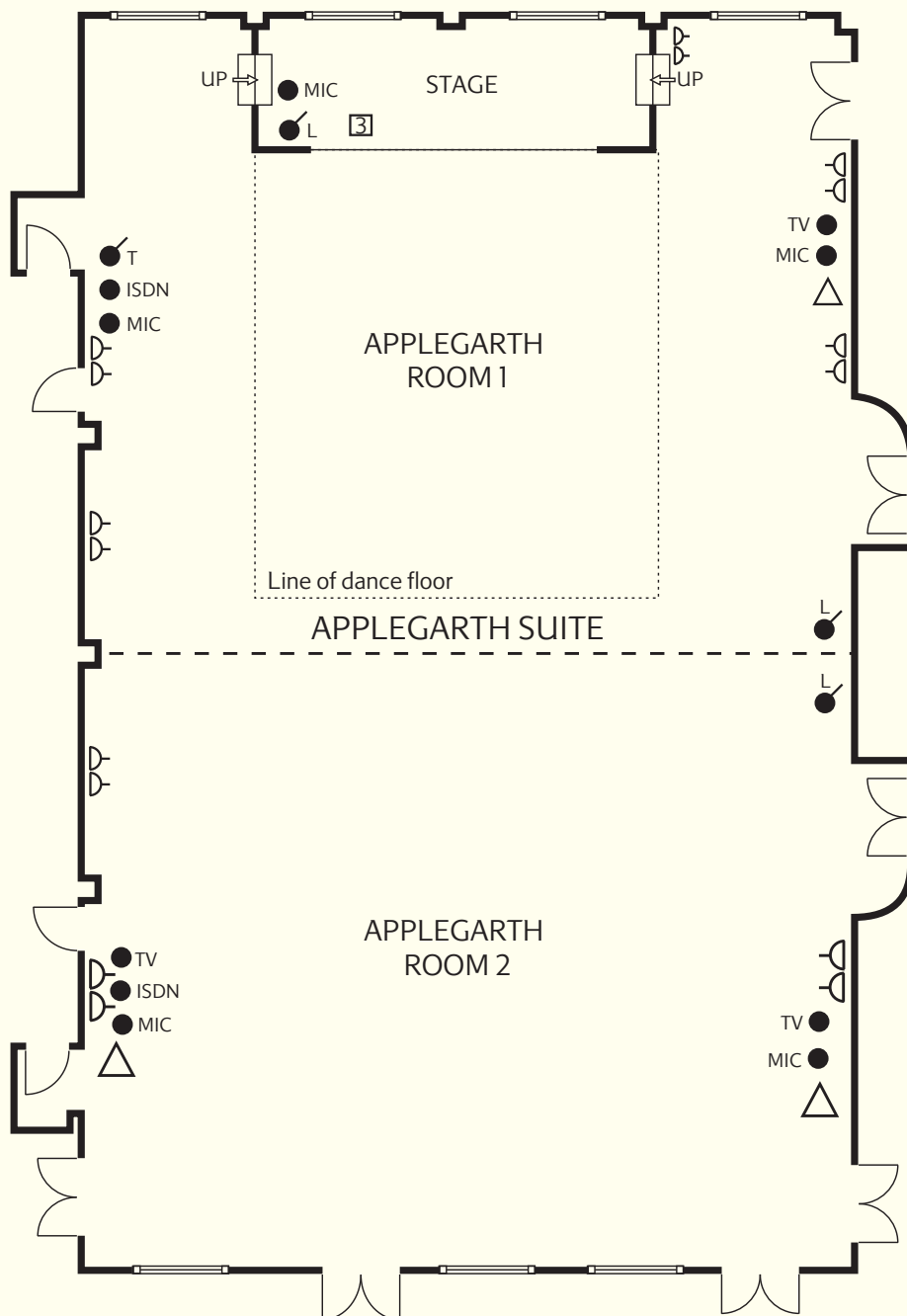


The Applegarth Suite

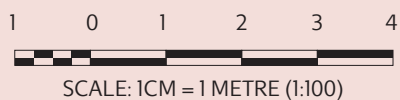
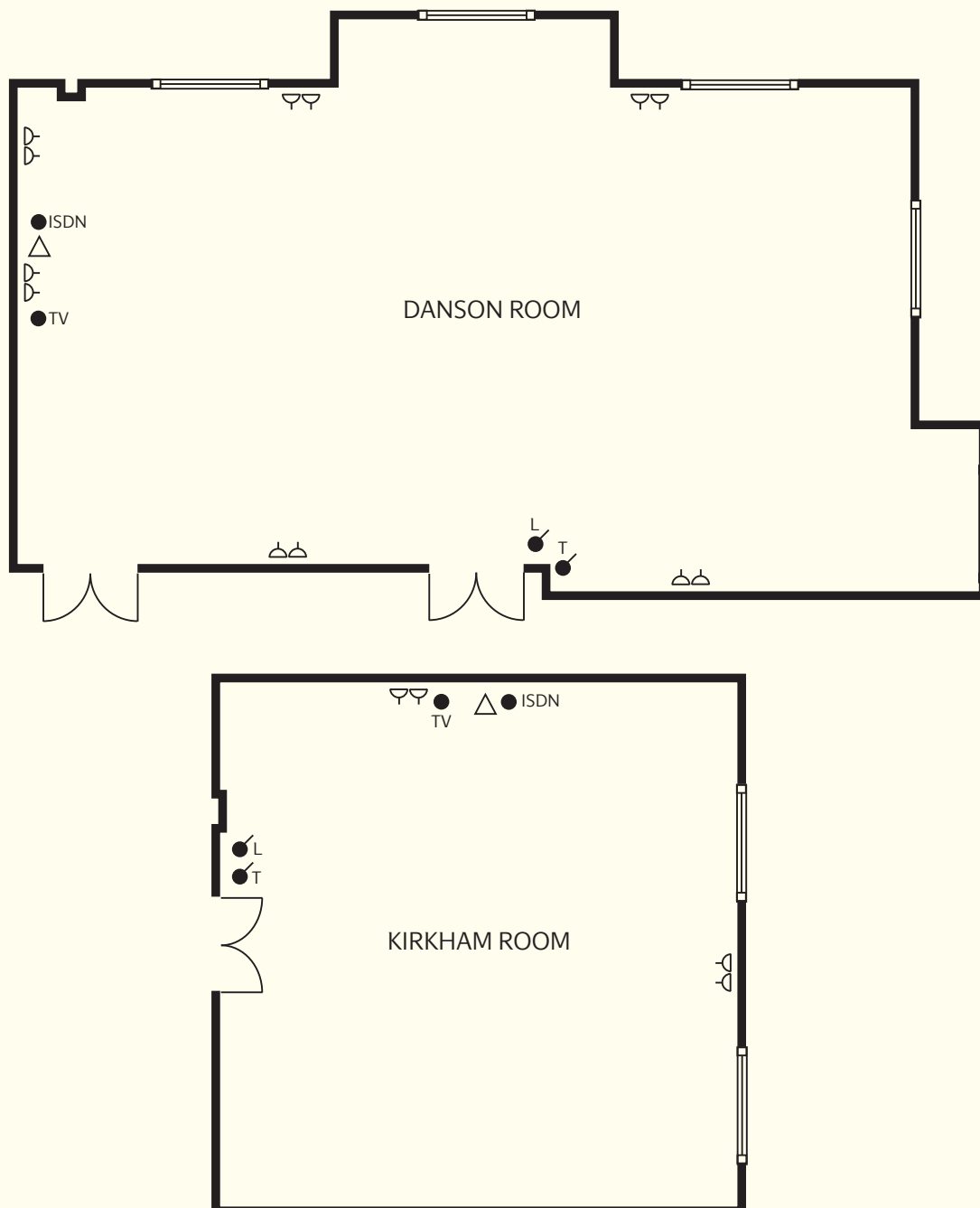
Fully air-conditioned and, by means of floor to ceiling acoustic partitions, divides into two self-contained rooms. Windows along two walls give the room a light, airy feel. Special features include computerised scene-setting lighting, personal room temperature controls and ISDN links for access to international events. The entire suite can accommodate up to 250 people and contains a dance floor, an adjoining private bar and large central foyer.



- | | | | |
|-----|----------------------|--------|--------------------------|
| H ● | LIGHTING | ● MIC | MICROPHONE POINT |
| L ● | TEMPERATURE | ● ISDN | ISDN POINT |
| T ● | POWER POINT - 13 AMP | △ | TELEPHONE/FAX POINT |
| △ | TV POINT | ▬ | WINDOW OR GLAZED SCREEN |
| ⏏ | 3 PHASE SUPPLY | - - - | ACOUSTIC MOVEABLE SCREEN |

The Danson and Kirkham Rooms

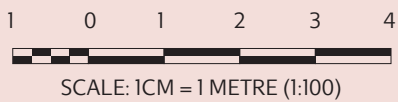
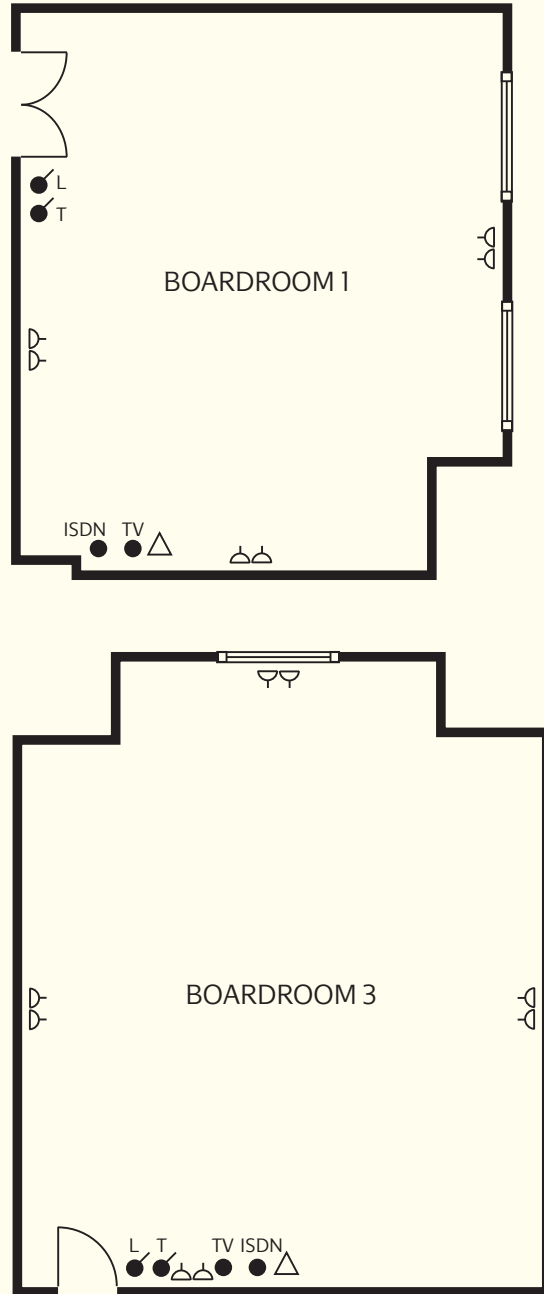
Both these rooms provide air-conditioning, natural light and conference and audio-visual equipment. They are also licensed for civil ceremonies. The setups are flexible and range from theatre or boardroom style to the u-shape, classroom or cabaret.



- | | | | | |
|---|----------------------|-------|-------|--------------------------|
| H | LIGHTING | ● | MC | MICROPHONE POINT |
| L | TEMPERATURE | ● | ISDN | ISDN POINT |
| T | POWER POINT - 13 AMP | △ | △ | TELEPHONE/FAX POINT |
| △ | TV POINT | ▬▬▬ | ▬▬▬ | WINDOW OR GLAZED SCREEN |
| ⏏ | 3 PHASE SUPPLY | - - - | - - - | ACOUSTIC MOVEABLE SCREEN |

Boardrooms 1 and 3

All boardrooms include air-conditioning, natural light and conference and audio-visual equipment. The setups are flexible and range from theatre or boardroom style to the u-shape, classroom or cabaret.

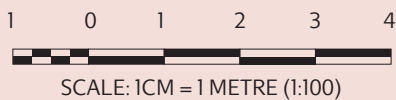
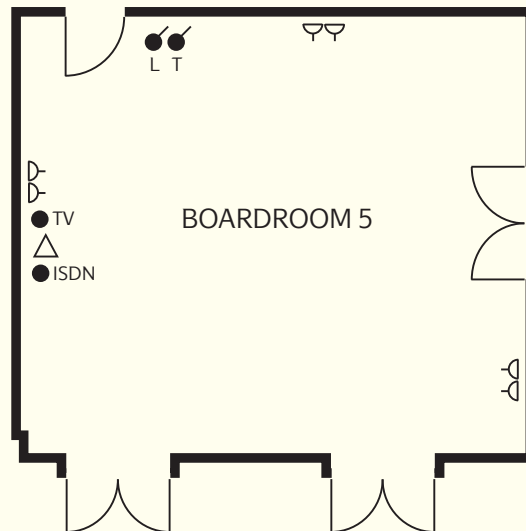
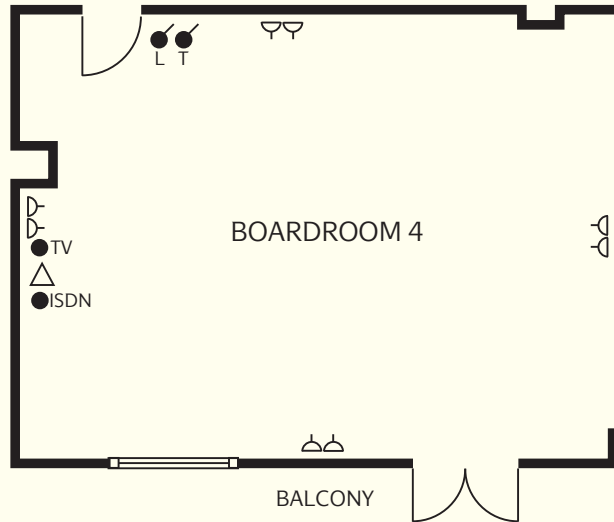


- | | |
|--------------------------|--------------------------------|
| H ● LIGHTING | ● MIC MICROPHONE POINT |
| L ● TEMPERATURE | ● ISDN ISDN POINT |
| T ● POWER POINT - 13 AMP | △ TELEPHONE/FAX POINT |
| △ TV POINT | ▬ WINDOW OR GLAZED SCREEN |
| ⊥ 3 PHASE SUPPLY | - - - ACOUSTIC MOVEABLE SCREEN |

Boardrooms 4 and 5

All boardrooms include air-conditioning, natural light and conference and audio-visual equipment.

The setups are flexible ranging from theatre or boardroom style to the u-shape often preferred by course organisers.



- | | | | |
|-----|----------------------|--------|--------------------------|
| H ● | LIGHTING | ● MIC | MICROPHONE POINT |
| L ● | TEMPERATURE | ● ISDN | ISDN POINT |
| T ● | POWER POINT - 13 AMP | △ | TELEPHONE/FAX POINT |
| ⌌ | TV POINT | ▬▬▬ | WINDOW OR GLAZED SCREEN |
| ⌌ | 3 PHASE SUPPLY | - - - | ACOUSTIC MOVEABLE SCREEN |