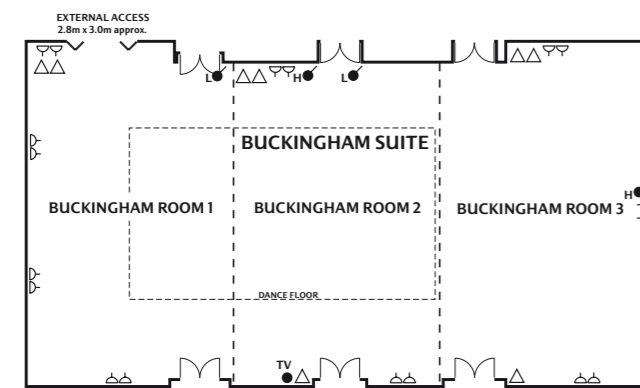


The Buckingham Suite is a large and highly adaptable facility that can accommodate up to 320 people for dinner. This highly flexible space is situated on the ground floor and can be divided into three sections. For added flexibility, it has its own breakout area and bar. Outside access makes stage sets – even vehicle delivery – an easy option.

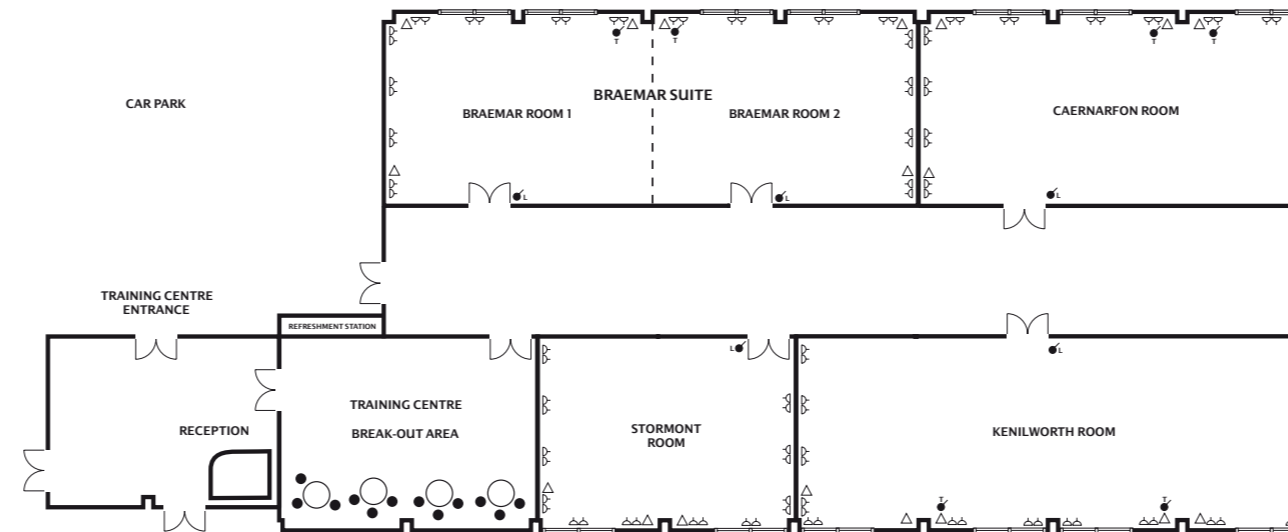
THE BUCKINGHAM SUITE.



- A ✓ AUDIO
- C ✓ COOLING
- H ✓ HEATING
- L ✓ LIGHTING
- T ✓ TEMPERATURE
- △ AMP POWER POINT – 13 AMP
- TV TV POINT
- ☐ 3 PHASE SUPPLY
- △ TELEPHONE/FAX POINT
- ▬ WINDOW OR GLAZED SCREEN
- ☐ 32 AMP SUPPLY
- E ELECTRIC SCREEN
- PS ✓ PROJECTION SCREEN CONTROL POINT
- ▭ COMFORT COOLING
- - - ACOUSTIC MOVEABLE SCREEN

This highly flexible space is actually five self-contained rooms in one ground floor location. Divide as you need. The suite has natural daylight with black-out facility, air conditioning, a breakout area and cloakroom, together with the very latest audio-visual technology, making this the perfect environment for training.

THE CASTLE SUITE.



- A ✓ AUDIO
- C ✓ COOLING
- H ✓ HEATING
- L ✓ LIGHTING
- T ✓ TEMPERATURE
- △ AMP POWER POINT – 13 AMP
- TV TV POINT
- ☐ 3 PHASE SUPPLY
- △ TELEPHONE/FAX POINT
- ▬ WINDOW OR GLAZED SCREEN
- ☐ 32 AMP SUPPLY
- E ELECTRIC SCREEN
- PS ✓ PROJECTION SCREEN CONTROL POINT
- ▭ COMFORT COOLING
- - - ACOUSTIC MOVEABLE SCREEN

Our nine different boardrooms, lit by natural light, provide prestigious meeting venues, each seating up to 10 people.

NINE BOARDROOMS.

	NATURAL DAYLIGHT	AIR CONDITIONING	WHEELCHAIR ACCESS	DIMENSIONS (METRES)			MAXIMUM NUMBER OF DELEGATES											
				L	W	H	THEATRE STYLE (NO PROJECTION)	THEATRE STYLE (BACK PROJECTION)	THEATRE STYLE (FRONT PROJECTION)	BOARDROOM STYLE	U-SHAPE	CLASSROOM STYLE (FRONT PROJECTION)	CABARET STYLE (NO PROJECTION)	CABARET STYLE (BACK PROJECTION)	CABARET STYLE (FRONT PROJECTION)	BUFFET RECEPTION	DINNER/DANCE	DINNER
Buckingham Suite (1,2 and 3)	✓	✓	✓	26.8	14.9	3	400	300	400	-	-	220	288	248	288	300	300	320
Buckingham Room (1)	✓	✓	✓	14.9	8.9	3	120	80	120	42	40	50	84	-	84	120	-	100
Buckingham Room (2)	✓	✓	✓	14	8.9	3	120	80	120	42	40	50	84	-	84	120	-	100
Buckingham Room (3)	✓	✓	✓	14.9	8.9	3	120	80	120	42	40	50	84	-	84	120	-	100
Kenilworth Room	✓	✓	✓	15.3	5.7	2.6	70	-	70	36	30	48	42	-	42	50	-	50
Braemar Suite (1 and 2)	✓	✓	✓	15.5	5.7	2.6	65	-	65	32	32	40	42	-	42	40	-	40
Braemar Room (1)	✓	✓	✓	7.7	5.7	2.6	30	-	30	14	16	18	21	-	21	20	-	20
Braemar Room (2)	✓	✓	✓	7.7	5.7	2.6	30	-	30	14	16	18	21	-	21	20	-	20
Caernarfon Room	✓	✓	✓	10.3	5.7	2.6	50	-	50	28	25	30	30	-	35	30	-	30
Stormont Room	✓	✓	✓	7.6	5.7	2.6	30	-	30	14	16	18	21	-	21	20	-	20
Warwick Room	✓	✓	✓	6.4	5	2.4	-	-	-	16	-	-	-	-	-	-	-	18
Windsor Room	✓	✓	✓	6.4	5.5	2.4	-	-	-	16	-	-	-	-	-	-	-	18
Boardrooms 1-9	✓	✓	✓	7	3.6	2.4	-	-	-	10	-	-	-	-	-	-	-	10
Cardiff Interview Room	✓	✓	✓	6	3.6	2.4	-	-	-	-	-	-	-	-	-	-	-	-