

## BREADSALL PRIORY, A MARRIOTT HOTEL & COUNTRY CLUB

Moor Road, Morley, Nr Derby, Derbyshire DE7 6DL

Phone 01332 832 235 Fax 01332 833 509

Breadsall Priory, A Marriott Hotel & Country Club, is a magnificent Grade II Listed, 13th century stately residence set in breathtaking scenery on the edge of the Peak District near Derby. History meets modern comfort at this spectacular location, and following a £1.8m refurbishment throughout the hotel, you will be impressed from the moment you arrive.

Close to East Midlands Airport, Alton Towers, Donnington Park, and major motorway and rail links means you enjoy historic splendour while staying close to what's really important.

Meeting Room	Natural Daylight	Air Conditioning	Wheelchair Access	Dimensions LxWxH (Metres)	Capacity										
					Theatre Style (No Projection)	Theatre Style (Back Projection)	Theatre Style (Front Projection)	Boardroom Style	U-Shape	Classroom Style	Cabaret Style (No Projection)	Cabaret Style (Back Projection)	Cabaret Style (Front Projection)	Buffet Reception	Dinner/Dance
Pavilion Room	✓	✓	✓	12.1 x 8.2 x 2.7	120	70	100	36	34	60	72	64	140	90	110
Haslam Room	✓	✓	-	9.4 x 6.7 x 4.1	90	60	80	28	28	40	48	40	110	60	80
Morley Room	✓	✓	-	9.3 x 5.6 x 3.9	70	40	50	20	20	20	32	24	50	-	40
Breadsall Room	✓	-	✓	9.1 x 6.1 x 3.7	60	40	50	22	20	20	32	24	50	-	40
Darwin Room	✓	✓	-	6.4 x 5.3 x 3.8	35	-	25	12	10	-	-	-	-	-	12
Gun Room	✓	-	✓	5.5 x 4.1 x 3.1	24	-	16	12	10	-	-	-	-	-	12
Lute Room	✓	✓	-	4.8 x 4.8 x 2.4	-	-	-	10	-	-	-	-	-	-	12
Dulcimer Room	✓	✓	-	5.4 x 4.8 x 2.4	20	-	16	12	10	-	-	-	-	-	12
David Cox Room	✓	✓	✓	8.5 x 7.7 x 2.9	40	40	50	24	22	-	-	-	50	-	40

### ACCOMMODATION

112 ensuite bedrooms (including premium rooms and suites), TV, radio, WIFI enabled, safe, hairdryer, direct-dial telephone, tea and coffee making facilities, iron, trouser press and data sockets.

### RESTAURANTS & LOUNGES

The AA award winning Priory Restaurant, Bentley's Bar and our newly refurbished Tempo Restaurant and Bar. Private dining can be arranged for larger parties. For All guests we recommend you reserve your table in the Priory Restaurant prior to arrival to avoid disappointment.

### MEETING FACILITIES

9 function rooms tastefully decorated in keeping with the traditional features of the building, suitable for all conference, wedding and individual celebrations, max capacity 140

### RECREATION & LEISURE

Complimentary: indoor heated swimming pool, spa bath, sauna, steam room, gyms, tennis court, aerobics studio. Supplementary: Health & Beauty Salon, solarium and hairdressing, offering a wide range of treatments. Please book in advance to avoid disappointment.

### ATTRACTIONS

Breadsall Priory is set within 400 acres of beautiful Derbyshire countryside close to the Peak District National Park and the nearby attractions of Chatsworth House and Alton Towers.

### GOLF FACILITIES

Two contrasting 18 hole golf courses, pre-booking of tee times is recommended to avoid disappointment.  
• Driving range with short game practice area.

### DIRECTIONS

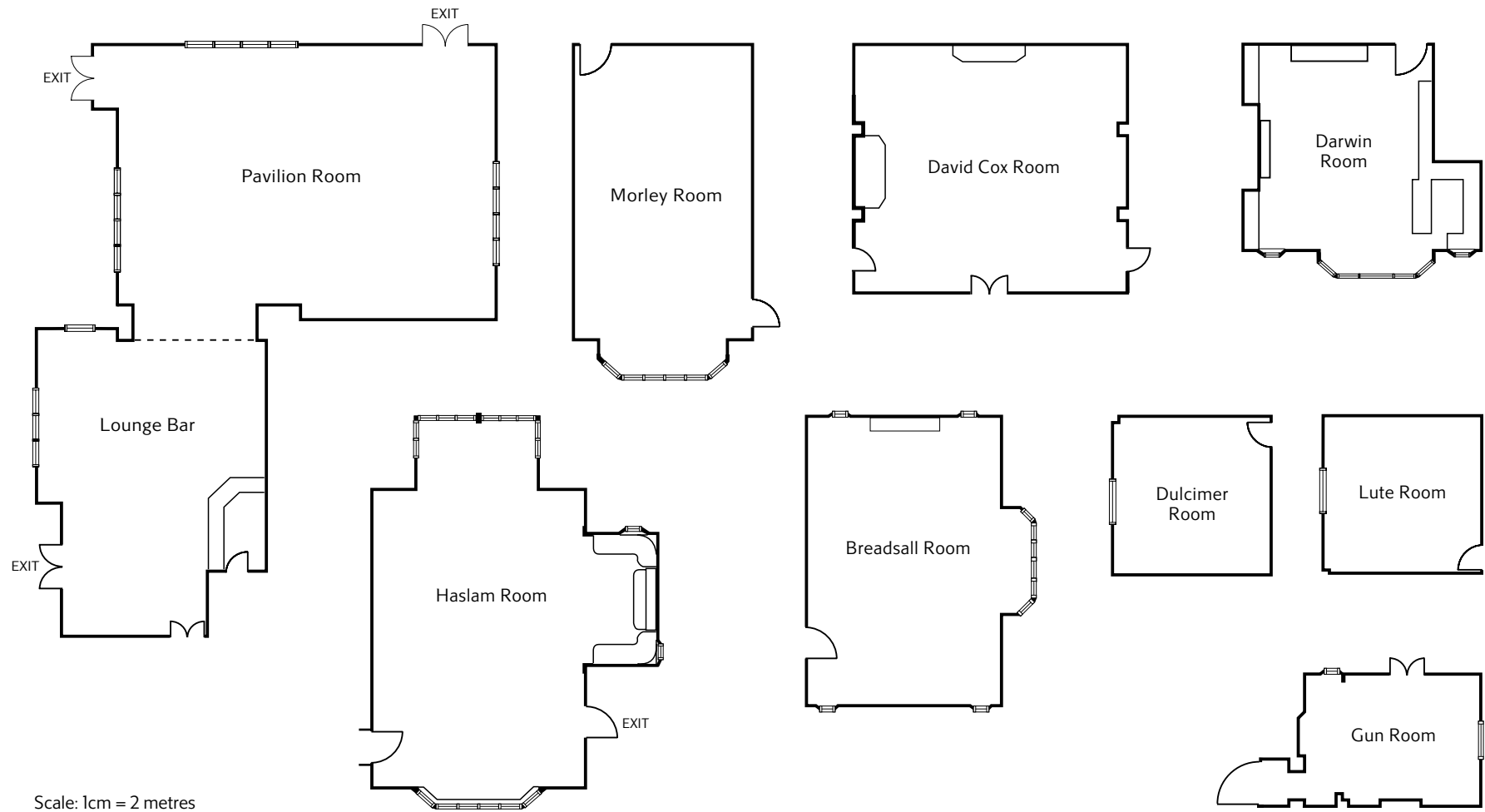
**Travelling north:** Exit M1 at junction 25, turn left onto the A52 towards Derby. At first roundabout, after approximately 7 miles, take exit signposted A61

Chesterfield. Straight over next two roundabouts. At third roundabout turn right into Breadsall Village. Turn left into Rectory Lane, then follow the road sharp right. Turn left into Moor Road. Breadsall Priory is approximately 1.5 miles on the left.

**Travelling south:** Exit M1 at junction 28, onto A38 towards Derby. Turn left at next two roundabouts into Breadsall Village and continue as above. Car parking available for guests.

### RESERVATIONS AND PAYMENT

Reservations are held for guest arrival until 4pm. You can guarantee your booking by simply advising us of your credit card number when you book. All Major Credit and Debit cards accepted



Contemporary conference rooms with original period features are designed to inspire focus and creativity. Combine this with superb leisure facilities, including championship golf, the Priory Retreat Spa, classic and modern dining to ensure relaxation and work go hand in hand. Make your special event or social break a resounding success at Breadsall Priory, A Marriott Hotel & Country Club – the most dramatic venue in the heart of the Midlands.